

## 36-1679: Monoclonal Antibody to gp100 / Melanosome / PMEL17 / SILV (Melanoma Marker)(Clone : SPM142)

<b>Clonality :</b>	Monoclonal
<b>Clone Name :</b>	SPM142
<b>Application :</b>	FACS,IF,WB,IHC
<b>Reactivity :</b>	Human
<b>Gene :</b>	PMEL
<b>Gene ID :</b>	6490
<b>Uniprot ID :</b>	P40967
<b>Format :</b>	Purified
<b>Alternative Name :</b>	PMEL,D12S53E,PMEL17,SILV
<b>Isotype :</b>	Mouse IgG1, kappa
<b>Immunogen Information :</b>	Extract of pigmented melanoma metastases from lymph nodes

### Description

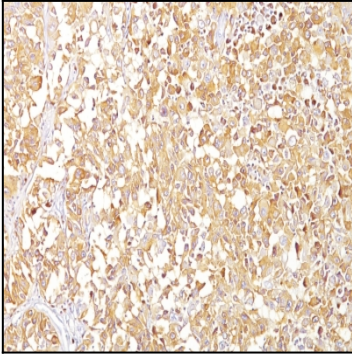
By immunohistochemistry, it specifically recognizes a protein in melanocytes and melanomas. This MAb reacts with junctional and blue nevus cells and variably with fetal and neonatal melanocytes. Intradermal nevi, normal adult melanocytes, and non-melanocytic cells are negative. It does not stain tumor cells of epithelial, lymphoid, glial, or mesenchymal origin. Metastatic amelanotic melanoma can often be confused with a variety of poorly differentiated carcinomas, large cell lymphomas, and sarcomas using H & E stains alone. It is also difficult to differentiate melanoma from spindle cell carcinomas and various types of mesenchymal neoplasms. It stains fetal and neonatal melanocytes, junctional and blue nevus cells, and malignant melanoma. This MAb also stains Angiomyolipoma.

### Product Info

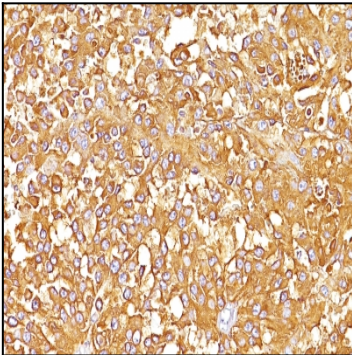
<b>Amount :</b>	100 µg
<b>Purification :</b>	Affinity Chromatography
<b>Content :</b>	100 µg in 500 µl PBS containing 0.05% BSA and 0.05% sodium azide. Sodium azide is highly toxic.
<b>Storage condition :</b>	Store the antibody at 4°C; stable for 6 months. For long-term storage; store at -20°C. Avoid repeated freeze and thaw cycles.

### Application Note

Flow Cytometry (1-2ug/million cells); Immunofluorescence (1-2ug/ml); Western Blot (2-4ug/ml); Immunohistochemistry (Formalin-fixed) (1-2ug/ml for 30 minutes at RT)(Staining of formalin-fixed tissues requires heating tissue sections in 10mM Tris with 1mM EDTA, pH 9.0, for 45 min at 95&degC followed by cooling at RT for 20 minutes);



Formalin-fixed, paraffin-embedded human Melanoma stained with gp100 / Melanosome Monoclonal Antibody (SPM142).



Formalin-fixed, paraffin-embedded human Melanoma stained with gp100 / Melanosome Monoclonal Antibody (SPM142).