

36-1649: Monoclonal Antibody to Bcl-X (Apoptosis Marker)(Clone : 2H12)

Clonality :	Monoclonal
Clone Name :	2H12
Application :	FACS,IF,WB,IHC
Reactivity :	Human, Mouse, Rat
Gene :	BCL2L1
Gene ID :	598
Uniprot ID :	Q07817
Format :	Purified
Alternative Name :	BCL2L1,BCL2L,BCLX
Isotype :	Mouse IgG2a, kappa
Immunogen Information :	A synthetic peptide, aa 3-14 (Cys-QSNRELVVDFLS) of human Bcl-X protein

Description

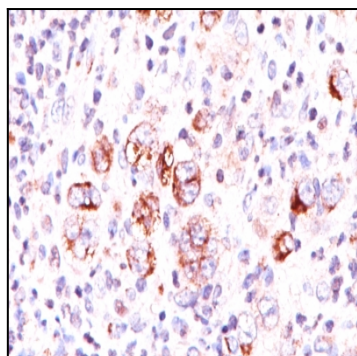
Recognizes a protein of 27kDa, identified as the Bcl-X protein. This MAb shows no cross-reaction with Bcl-2 or Bax protein. Bcl-X has two isoforms, Bcl-XL (long), a 241 amino acid protein which suppresses cell death. And Bcl-XS (short), a 178 amino acid protein lacking a 63 amino acid domain which functions as a dominant inhibitor of Bcl-2. This MAb reacts with both Bcl-XS and Bcl-XL proteins.

Product Info

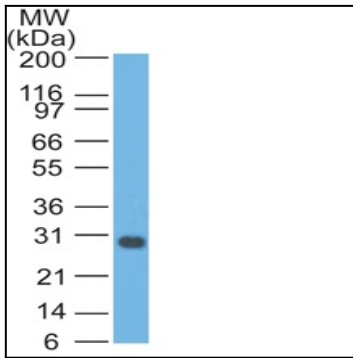
Amount :	100 µg
Purification :	Affinity Chromatography
Content :	100 µg in 500 µl PBS containing 0.05% BSA and 0.05% sodium azide. Sodium azide is highly toxic.
Storage condition :	Store the antibody at 4°C; stable for 6 months. For long-term storage; store at -20°C. Avoid repeated freeze and thaw cycles.

Application Note

Flow Cytometry (1-2ug/million cells); Immunofluorescence (1-2ug/ml); Western Blot (1-2ug/ml); Immunohistochemistry (Formalin-fixed) (1-2ug/ml for 30 minutes at RT) (Staining of formalin-fixed tissues requires heating tissue sections in 10mM Tris buffer with 1mM EDTA, pH 9.0, for 45 min at 95°C followed by cooling at RT for 20 minutes)



Formalin-fixed, paraffin-embedded human Hodgkin's Lymphoma stained with Bcl-x Monoclonal Antibody (2H12). Note cytoplasmic and membrane staining.



Western Blot of Jurkat Cell Lysate using Bcl-x Monoclonal Antibody (2H12).