

12-4345: Phospho-NPM (Ser4) (Clone: A1) rabbit mAb

Clonality :	Monoclonal
Clone Name :	NPMS4-A1
Application :	FACS, WB
Reactivity :	Human
Conjugate :	Unconjugated
Format :	Purified
Alternative Name :	Nucleophosmin, Nucleolar phosphoprotein B23, numartin, nuclear protein NO38
Isotype :	Rabbit IgG1k
Immunogen Information :	A synthetic phospho-peptide corresponding to residues surrounding Ser4 of human phospho-NPM

Product Info

Amount :	20 µl / 200 µl
Content :	1X PBS, 0.02% NaN ₃ , 50% Glycerol, 0.1% BSA
Storage condition :	Store at -20°C. Avoid repeated freeze and thaw cycles.

Application Note

1 µg/mL - 0.001 µg/mL. It is recommended that the reagent be titrated for optimal performance for each application. See product image legends for additional information.(0.5mg/ml, more than 200 western blots)

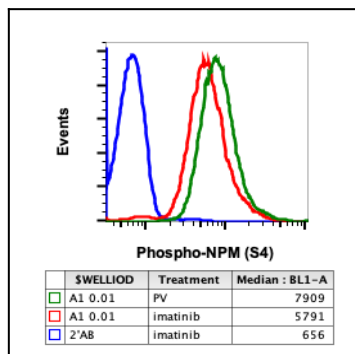


Fig-1: Flow cytometric analysis of K562 cells secondary antibody only as negative control (blue) or treated with imatinib (red) or treated with pervanadate (green) using Phospho-NPM (Ser4) at 0.01 µg/mL.

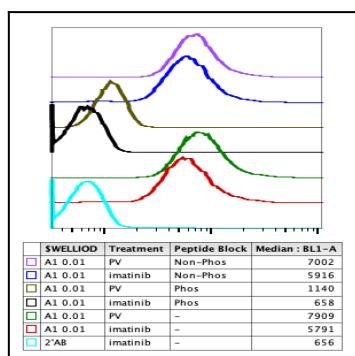


Fig 2 : Peptide blocking flow cytometric analysis of K562 cells secondary antibody only negative control (light blue) or treated with imatinib (red) or treated with pervanadate (green) or treated with imatinib and blocked with phospho-peptide (black) or treated with pervanadate and blocked with phospho-peptide (gold) or treated with imatinib and blocked by non-phospho-peptide (dark blue) or treated with pervanadate and block with non-phospho-peptide (purple) using Phospho-NPM (Ser4) antibody NPMS4-A1 at 0.01 µg/mL.

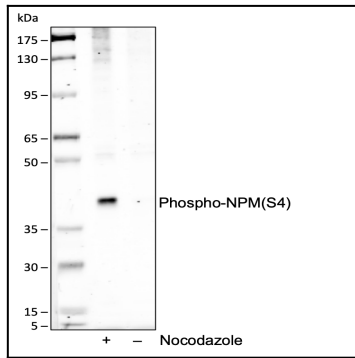


Fig-3: Western blot analysis of extract from HeLa cells untreated or treated with nocodazole using Phospho-NPM (Ser4) antibody NPMS4-A1 at 01 $\mu\text{g}/\text{mL}$.