

12-4340: Phospho-MARCKS (Ser167/170) (Clone: C9) rabbit mAb APC conjugate

Clonality :	Monoclonal
Clone Name :	MARCKSS167170-C9
Application :	FACS
Reactivity :	Human
Conjugate :	APC
Alternative Name :	Myristoylated alanine-rich C-kinase substrate, Protein kinase C substrate, PKCSL, 80 kDa protein light chain, MACS, PRKCSL
Isotype :	Rabbit IgG1k
Immunogen Information :	A synthetic phospho-peptide corresponding to residues surrounding Ser167/170 of human phospho MARCKS

Description

MARCKS (myristoylated alanine-rich C kinase substrate) is a major PKC substrate expressed in all eukaryotic cells(1,2). It binds to and cross-links actin filaments to serve as a bridge between Ca²⁺/calmodulin and PKC signaling and attenuates phosphatidylinositol 4,5-bisphosphate plasma membrane signaling (3). MARCKS is involved with cell mobility, phagocytosis, membrane traffic, cell adhesion, and mitogenesis. Ser159, 163, 167 and 170 of MARCKS are phosphorylated by PKC in response to cell growth and cellular stress (4). MARCKS phosphorylation is believed to induce its translocation from plasma membrane to cytoplasm.

Product Info

Amount :	10 Tests / 100 Tests
Content :	1X PBS, 0.09% NaN ₃ , 0.2% BSA
Storage condition :	Store at 2-8°C. Avoid repeated freeze and thaw cycles.

Application Note

For flow cytometric staining, the suggested use of this reagent is 5 µL per million cells or 5 µL per 100 µL of staining volume. It is recommended that the reagent be titrated for optimal performance for each application. See product image legends for additional information.

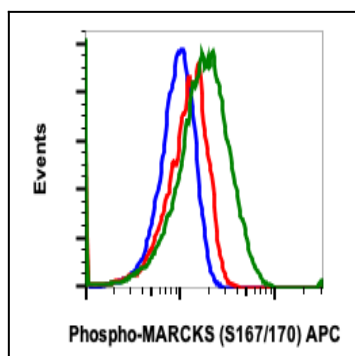


Fig-1: Flow cytometric analysis of C6 cells, isotype IgG-FITC stained staurosporine treated cells as negative control (blue) or treated with staurosporine (red) or with UV+TPA (green) and stained using Phospho-MARCKS (Ser167/170) antibody MARCKSS167170-C9 APC conjugate.