

12-4330: Phospho-MCM2 (Ser139) (Clone: B12) rabbit mAb PE conjugate

Clonality :	Monoclonal
Clone Name :	MCM2S139-B12
Application :	FACS
Reactivity :	Human, Mouse, Rat
Conjugate :	PE
Format :	Conjugated
Alternative Name :	DNA replication licensing factor MCM2, Minichromosome maintenance protein 2 homolog, Nuclear protein BM28, CCNL1, CDCL1, KIAA0030
Isotype :	Rabbit IgG1k
Immunogen Information :	A synthetic phospho-peptide corresponding to residues surrounding Ser139 of human phospho MCM2

Description

The members of minichromosome maintenance (Mcm) protein family 2-7 were originally identified as a group of proteins essential for DNA replication (chromosomal maintenance (1,2). They share common sequence homology to each other in their nucleotide-binding domains and are distinct subgroup of the large AAA ATPase family, which are required for the initiation and elongation of DNA replication. It has been reported that Cdc7/Dbf4 phosphorylates MCM2 during G1/S cell cycle which coincides with the initiation of DNA replication (3,4)

Product Info

Amount :	10 Tests / 100 Tests
Content :	1X PBS, 0.09% NaN ₃ , 0.2% BSA
Storage condition :	Store at 2-8°C. Avoid repeated freeze and thaw cycles.

Application Note

For flow cytometric staining, the suggested use of this reagent is 5 $\mu\text{g}/\text{mL}$ per million cells or 5 $\mu\text{g}/\text{mL}$ per 100 μL of staining volume. It is recommended that the reagent be titrated for optimal performance for each application. See product image legends for additional information.

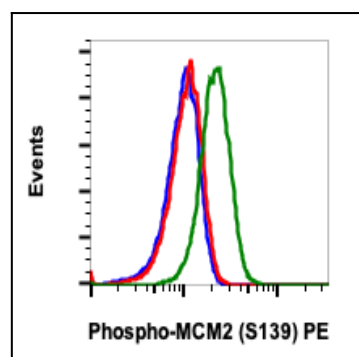


Fig-1: Flow cytometric analysis of C6 cells, untreated and unstained as negative control (blue) or untreated (red) or treated with staurosporine (green) and stained using Phospho-MCM2 (Ser139) antibody MCM2S139-B12 PE conjugate.