

12-4298: Phospho-mTOR (Ser2448) (Clone: E11) rabbit mAb APC Conjugate

| | |
|--------------------------------|---|
| Clonality : | Monoclonal |
| Clone Name : | mTORS2448-E11 |
| Application : | FACS |
| Reactivity : | Human |
| Conjugate : | APC |
| Alternative Name : | Serine/threonine-protein kinase mTOR, FK506-binding protein 12-rapamycin complex-associated protein 1, FKBP12-rapamycin complex-associated protein, Mammalian target of rapamycin, Mechanistic target of rapamycin, Rapamycin and FKBP12 target 1, Rapamycin target protein 1, FRAP, FRAP1, FRAP2, RAFT1, RAPT1 |
| Isotype : | Rabbit IgG1k |
| Immunogen Information : | A synthetic phospho-peptide corresponding to residues surrounding Ser2448 of human phospho mTOR |

Description

mTOR, mammalian target of rapamycin, is a Serine/Threonine protein kinase (1-2) that functions as an amino acid and ATP sensor to balance cell growth and nutrient availability (3-4). When sufficient nutrients are available, mTOR transmits a positive signal to p70 S6 kinase and participates in the inactivation of 4E-BP1 (5). mTOR plays a key role in homeostasis and cell growth, and phospho mTOR may be abnormally regulated in tumors. mTOR is a potential target for anti-cancer therapy (6).

Product Info

| | |
|----------------------------|--|
| Amount : | 10 Tests / 100 Tests |
| Content : | 1X PBS, 0.09% NaN ₃ , 0.2% BSA |
| Storage condition : | Store at 2-8°C. Avoid repeated freeze and thaw cycles. |

Application Note

For flow cytometric staining, the suggested use of this reagent is 5 μ L per million cells or 5 μ L per 100 μ L of staining volume. It is recommended that the reagent be titrated for optimal performance for each application. See product image legends for additional information.

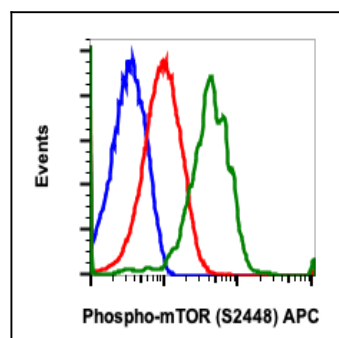


Fig-1: Flow cytometric analysis of A431 cells treated with phosphatase and unstained as negative control (blue) or treated with phosphatase (red) or EGF (green) and stained using Phospho-mTOR (Ser2448) APC conjugated antibody mTORS2448-E11.