

12-4281: Phospho-Shp1 (Tyr536) (Clone: 2A7) rabbit mAb

| | |
|--------------------------------|--|
| Clonality : | Monoclonal |
| Clone Name : | Shp1Y536-2A7 |
| Application : | FACS |
| Reactivity : | Human |
| Conjugate : | Unconjugated |
| Format : | Purified |
| Alternative Name : | Tyrosine-protein phosphatase non-receptor type 6, Hematopoietic cell protein-tyrosine phosphatase, Protein-tyrosine phosphatase 1C, PTP-1C, SH-PTP1, PTPN6, HCP, PTP1C |
| Isotype : | Rabbit IgG1k |
| Immunogen Information : | A synthetic phospho-peptide corresponding to residues surrounding Tyr536 of human phospho Shp1 |

Description

Src homology-2 domain containing phosphatase-1 (Shp1) typically functions as a negative regulator for signal transduction, interacting with Zap70, CD5, CD3e, and IL-2R in T cells. Shp1 suppresses cellular signaling by dephosphorylating target proteins. Shp1 is expressed predominantly in hematopoietic cells, where it can play a role in malignant transformation into cancer cells. Methylation of the Shp1 promoter has been shown to silence Shp1 expression and promote the development of cancer. Shp1 negatively regulates PDGF and insulin tyrosine receptor pathways, and negatively regulates Lck in the TCR signaling pathway to limit TCR responsiveness. Shp1 activity is prevented by TAOK3 in T cells to allow for T cell activation and differentiation.

Product Info

| | |
|----------------------------|---|
| Amount : | 20 μ l / 200 μ l |
| Content : | 1X PBS, 0.02% NaN ₃ , 50% Glycerol, 0.1% BSA |
| Storage condition : | Store at -20°C. Avoid repeated freeze and thaw cycles. |

Application Note

1 μ g/mL - 0.001 μ g/mL. It is recommended that the reagent be titrated for optimal performance for each application. See product image legends for additional information.(0.5mg/ml, more than 200 western blots)

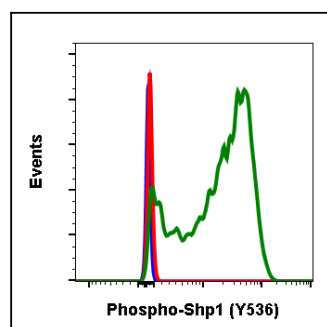


Fig-1: Flow cytometric analysis of Ramos cells secondary antibody only negative control (blue) or untreated (red) or treated with pervanadate (green) using Phospho-Shp1 (Tyr536) antibody Shp1Y536-2A7 at 0.1 μ g/mL.