

12-4240: Phospho-PDK1 (Ser241) (Clone: F7) rabbit mAb PE conjugate

Clonality :	Monoclonal
Clone Name :	PDK1S241-F7
Application :	FACS
Reactivity :	Human
Conjugate :	PE
Format :	Conjugated
Alternative Name :	3-phosphoinositide-dependent protein kinase 1, PDK1
Isotype :	Rabbit IgG1k
Immunogen Information :	A synthetic phospho-peptide corresponding to residues surrounding Ser241 of human phospho PDK1

Description

PDK1 is a Ser/Thr kinase that is ubiquitously expressed throughout human tissues. PDK1 phosphorylates protein kinase B (PKB or Akt) at both Thr308 and Ser473 in vivo. PDK1 is active and phosphorylated in basal conditions, where it exists predominantly in the cytosol with a small fraction at the plasma membrane. This membrane association is likely mediated by PDK1 binding to phospholipids through its PH domain, which has been found to have strong affinity to specific phospholipids. PDK1 is a master regulator of at least 23 related protein kinases, and more than 50% of all human cancers show significant overstimulation of the PDK1 pathway. Most small-molecule inhibitors of PDK1 target the ATP binding site.

Product Info

Amount :	10 Tests / 100 Tests
Content :	1X PBS, 0.09% NaN ₃ , 0.2% BSA
Storage condition :	Store at 2-8°C. Avoid repeated freeze and thaw cycles.

Application Note

For flow cytometric staining, the suggested use of this reagent is 5 μ L per million cells or 5 μ L per 100 μ L of staining volume. It is recommended that the reagent be titrated for optimal performance for each application.

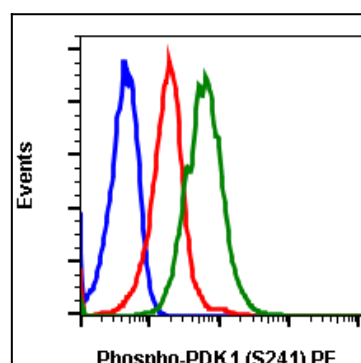


Fig-1: Flow cytometric analysis of 293T cells unstained K252a treated cells (blue) or stained treated with K252a (red) or with pervanadate (green) using phospho-PDK1 (Ser241) antibody PDK1S241-F7 PE conjugate.