

12-4228: Phospho-MEK1 (Ser298) (Clone: H8) rabbit mAb PE conjugate

Clonality :	Monoclonal
Clone Name :	MEK1S298-H8
Application :	FACS
Reactivity :	Human, Mouse
Conjugate :	PE
Format :	Conjugated
Alternative Name :	Dual specificity mitogen-activated protein kinase kinase 1, MAPK/ERK kinase 1, MAPKK1, MAP2K1, PRKMK1
Isotype :	Rabbit IgG1k
Immunogen Information :	A synthetic phosphoo-peptide corresponding to residues surrounding Ser298 of human phospho MEK1

Description

Mitogen-activated protein kinase (MAPK) is the main building block of the intracellular signaling network. The signals are initiated by activation of a small G protein (e.g., Ras), followed by a sequential activation of several sets of protein kinases. The extracellular signal-regulated kinase (ERK) pathway is stimulated by a large number of extracellular stimuli as well as various internal processes. This cascade regulates processes related to proliferation, differentiation, development, and oncogenic transformation. The signaling is usually initially started by activation of small G proteins (e.g. Ras), which in turn recruits to the membrane and activates the MAP3K (Raf kinase). The cascade leads to the activation of MAP kinase kinases (MEKs). MEKs are phosphorylated at Ser218 and Ser222 in MEK1. The phosphorylation activates MEKs. Phosphorylation of MEK at other sites regulates its activity as well. For example, phosphorylation at Ser386 by ERKs may either inhibit ERKs activity or under certain condition, facilitate the activation of ERKs by enhancing the MEK1 binding to Grb10 scaffold protein. Phosphorylation of MEK1 at Ser298 by p21-activating protein (PAK1) may lead to its activation whereas this can be inhibited by a feedback phosphorylation of MEK1 at Thr292 by ERKs. Protein Ser/Thr phosphatase inactivates MEK by dephosphorylation of pSer218 and pSer222. Other phosphatases may also regulate MEK activity. Upon activation, MEKs behaves as a dual kinase and phosphorylate key Tyr and Thr residues of ERKs, thus causing their activation.

Product Info

Amount :	10 Tests / 100 Tests
Content :	1X PBS, 0.09% NaN ₃ , 0.2% BSA
Storage condition :	Store at 2-8°C. Avoid repeated freeze and thaw cycles.

Application Note

For flow cytometric staining, the suggested use of this reagent is 5 μ L per million cells or 5 μ L per 100 μ L of staining volume. It is recommended that the reagent be titrated for optimal performance for each application.

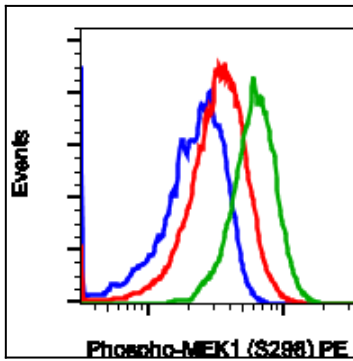


Fig-1: Flow cytometric analysis of HeLa cells treated with imatinib and unstained as negative control (blue) or treated with imatinib and stained (red) or treated with pervanadate and stained (green) using Phospho-MEK1(S298) antibody MEKS298-H8 PE conjugate.