

12-4225: Phospho-BAD (Ser112) (Clone: B9) rabbit mAb SureLight 488 conjugate

Clonality :	Monoclonal
Clone Name :	BADS112-B9
Application :	FACS
Reactivity :	Human, Mouse, Rat
Conjugate :	SureLight 488
Format :	Conjugated
Alternative Name :	Bcl2-associated agonist of cell death, Bcl-2-binding component 6, Bcl-2-like protein 8, BBC6, BCL2L8
Isotype :	Rabbit IgG1 Lamda
Immunogen Information :	A synthetic phospho-peptide corresponding to residues surrounding Ser112 of human phospho BAD

Description

Human BCL-2-associated death promoter (BAD) regulates apoptosis by binding to anti-apoptotic members of BCL family including BCL-2, BCL-xL, and BCL-w. The BAD protein signal transduction activity is regulated by multiple kinases and phosphatases. Non-phosphorylated BAD protein selectively dimerizes with Bcl-xL and Bcl-2 displacing Bax, which is then free to initiate mitochondrial membrane permeability, initiating apoptosis. When phosphorylated, BAD is unable to heterodimerize with Bcl-2 or Bcl-xL and is sequestered into the cytosolic compartment by binding to 14-3-3 protein. BAD protein has been shown to phosphorylated at multiple sites. The phosphorylation of 3 serine residues (Ser112, Ser136 and Ser155) effects the activity of the BAD. Multiple kinases phosphorylate BAD at these serine site. Ribosomal protein S6 kinase alpha-1 (RPS6KA1/RSK) and cAMP-dependent protein kinase phosphorylated BAD at Ser112 while protein kinase B (PKB/Akt) phosphorylates BAD at Ser136 residue. Phosphorylation of BAD at Ser-155 is preferentially carried out by Protein Kinase A. Other BAD phosphorylation sites may regulation cellular localization of BAD. Phosphorylation of both Ser75 and Ser99 increases sequestration of BAD by 14-3-3 protein which leads to translocation of BAD from the mitochondria to the cytosol. This prevents BAD from binding to anti-apoptotic proteins. Phosphorylation at Ser99 also prevents BAD from binding to the hydrophobic groove of Bcl-2 and Bcl-XL.

Product Info

Amount :	10 Tests / 100 Tests
Content :	1X PBS, 0.09% NaN ₃ , 0.2% BSA
Storage condition :	Store at 2-8°C. Avoid repeated freeze and thaw cycles.

Application Note

For flow cytometric staining, the suggested use of this reagent is 5 μ L per million cells or 5 μ L per 100 μ L of staining volume. It is recommended that the reagent be titrated for optimal performance for each application.

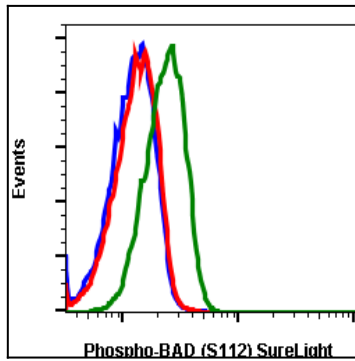


Fig-1: Flow cytometric analysis of COS7 cells unstained and untreated as negative control (blue) or stained untreated (red) or cell treated with TPA + Calyculin A (green) using Phospho-BAD (Ser112) antibody BADS112-B9 SureLight488-conjugated.