

12-4167: Phospho-Shp2 (Tyr580) (Clone: 4A2) rabbit mAb APC conjugate

Clonality :	Monoclonal
Clone Name :	Shp2Y580-4A2
Application :	FACS
Reactivity :	Human, Mouse
Conjugate :	APC
Format :	Conjugated
Alternative Name :	Tyrosine-protein phosphatase non-receptor type 11, Protein-tyrosine phosphatase 1D, PTP-1D, Protein-tyrosine phosphatase 2C, SH-PTP3, PTPN11, PTP2C, SHPTP2
Isotype :	Rabbit IgG1k
Immunogen Information :	A synthetic phospho-peptide corresponding to residues surrounding Tyr580 of human phospho Shp2

Description

Src homology region 2 (SH2)-containing protein tyrosine phosphatase 2 (Shp2, phospho Shp2), encoded by PTPN11 gene, is a non-receptor phosphotyrosine phosphatase which is ubiquitously expressed in mammalian cells and contain one protein tyrosine phosphatase (PTP) catalytic domain and two SH2 domains. The phosphatase active site is located in the C-terminal of Shp2. Shp2 is phosphorylated by several stimulants and cytokines at Tyr580 inducing Shp2 activation. Activated Shp2 recruits Grb2 and Tyr580 phosphorylation of phospho Shp2 functions as the main binding site of Grb2, thereby activating downstream Ras in response to growth factors. In turn Grb2 controls FGFR2 phosphorylation by inhibiting receptor kinase and Shp2 phosphatase activity. Shp2 also promotes both ERK1/2 and PI3K/AKT signaling. High levels of Shp2 has been found in several cancer types including breast cancer and melanoma.

Product Info

Amount :	10 Tests / 100 Tests
Content :	1X PBS, 0.09% NaN ₃ , 0.2% BSA
Storage condition :	Store at 2-8°C. Avoid repeated freeze and thaw cycles.

Application Note

For flow cytometric staining, the suggested use of this reagent is 5 μ L per million cells or 5 μ L per 100 μ L of staining volume. It is recommended that the reagent be titrated for optimal performance for each application. See product image legends for additional information.

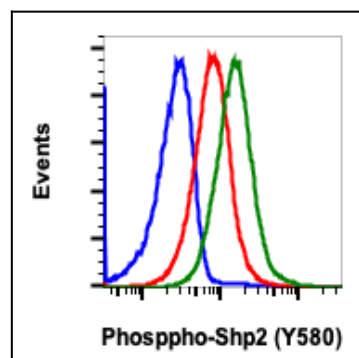


Fig-1: Flow cytometric analysis of U937 cells unstained as negative control (blue) or untreated (red) or treated with IFN α IL4 and pervanadate (green) and stained using phospho-Shp2 (Tyr580) APC conjugated antibody Shp2Y580-4A2.