

## 12-4162: Phospho-CrkL (Tyr207) (Clone: G4) rabbit mAb SureLight488 Conjugate

<b>Clonality :</b>	Monoclonal
<b>Clone Name :</b>	CrkLY207-G4
<b>Application :</b>	FACS
<b>Reactivity :</b>	Human, Mouse
<b>Conjugate :</b>	SureLight 488
<b>Format :</b>	Conjugated
<b>Alternative Name :</b>	Crk-like protein; CRKL; v-crk sarcoma virus CT10 oncogene homolog (avian)-like
<b>Isotype :</b>	Rabbit IgG1k
<b>Immunogen Information :</b>	A synthetic phosphopeptide corresponding to residues surrounding Tyr207 of human phospho CrkL

### Description

CrkL (v-Crk sarcoma virus CT10 oncogene-like protein) is an adaptor protein composed of one Src Homology 2 (SH2) and two Src Homology 3 (SH3) domains separated by flexible linker sequences that act as building blocks to assemble multiprotein complexes (1). The Crk adaptor proteins (Crk and CrkL) constitute an integral part of a network of essential signal transduction pathways in humans and other organisms that act as major convergence points in tyrosine kinase signaling. CRKL is required for the normal development of multiple tissues that rely on fibroblast growth factor 8 (FGF8). Phosphorylation of Crk on Tyr 221 or CrkL on Tyr 207 causes intramolecular binding of the linker region to the SH2 domain, sequestering the SH2 and SH3N and preventing them from binding target proteins (2,3). Mounting evidence indicates that dysregulation of Crk proteins is associated with human diseases, including cancer and susceptibility to pathogen infections.

### Product Info

<b>Amount :</b>	10 Tests / 100 Tests
<b>Content :</b>	1X PBS, 0.09% NaN <sub>3</sub> , 0.2% BSA
<b>Storage condition :</b>	Store at 2-8°C. Avoid repeated freeze and thaw cycles.

### Application Note

For flow cytometric staining, the suggested use of this reagent is 5  $\mu$ L per million cells or 5  $\mu$ L per 100  $\mu$ L of staining volume. It is recommended that the reagent be titrated for optimal performance for each application.

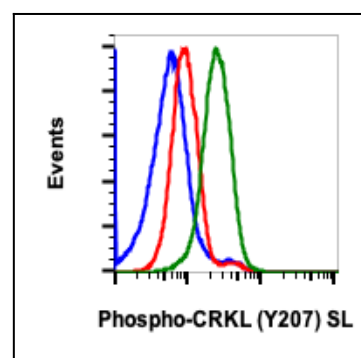


Fig-1: Flow cytometric analysis of K562 human myelogenous leukemia cells, treated with imatinib and unstained as negative control (blue) or treated with imatinib (red) or treated with pervanadate (green) and stained using Phospho-CRKL (Tyr207) antibody SureLight488 conjugate, CRKLY207-G4.