

12-4161: Phospho-CrkL (Tyr207) (Clone: G4) rabbit mAb APC conjugate

Clonality :	Monoclonal
Clone Name :	CrkLY207-G4
Application :	FACS
Reactivity :	Human, Mouse
Conjugate :	APC
Format :	Conjugated
Alternative Name :	Crk-like protein; CRKL; v-crk sarcoma virus CT10 oncogene homolog (avian)-like
Isotype :	Rabbit IgG1k
Immunogen Information :	A synthetic phospho-peptide corresponding to residues surrounding Tyr207 of human phospho CrkL

Description

CrkL (v-Crk sarcoma virus CT10 oncogene-like protein) is an adaptor protein composed of one Src Homology 2 (SH2) and two Src Homology 3 (SH3) domains separated by flexible linker sequences that act as building blocks to assemble multiprotein complexes (1). The Crk adaptor proteins (Crk and CrkL) constitute an integral part of a network of essential signal transduction pathways in humans and other organisms that act as major convergence points in tyrosine kinase signaling. CRKL is required for the normal development of multiple tissues that rely on fibroblast growth factor 8 (FGF8). Phosphorylation of Crk on Tyr 221 or CrkL on Tyr 207 causes intramolecular binding of the linker region to the SH2 domain, sequestering the SH2 and SH3N and preventing them from binding target proteins (2,3). Mounting evidence indicates that dysregulation of Crk proteins is associated with human diseases, including cancer and susceptibility to pathogen infections.

Product Info

Amount :	10 Tests / 100 Tests
Content :	1X PBS, 0.09% NaN ₃ , 0.2% BSA
Storage condition :	Store at 2-8°C. Avoid repeated freeze and thaw cycles.

Application Note

For flow cytometric staining, the suggested use of this reagent is 5 μ L per million cells or 5 μ L per 100 μ L of staining volume. It is recommended that the reagent be titrated for optimal performance for each application. See product image legends for additional information.

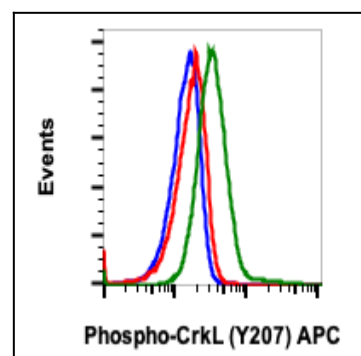


Fig-1: Flow cytometric analysis of K562 cells treated with imatinib and unstained (blue) as negative control or treated with imatinib (red) or treated with pervanadate (green) and stained using Phospho-CrkL (Tyr207) APC conjugated antibody CrkLY207-G4.