

12-4136: Phospho-PDK1 (Ser241) (Clone: F7) rabbit mAb

Clonality :	Monoclonal
Clone Name :	PDK1S241-F7
Application :	FACS
Reactivity :	Human
Conjugate :	Unconjugated
Format :	Purified
Alternative Name :	3-phosphoinositide-dependent protein kinase 1, PDK1
Isotype :	Rabbit IgG1k
Immunogen Information :	A synthetic phospho-peptide corresponding to residues surrounding Ser241 of human phospho PDK1

Description

PDK1 is a Ser/Thr kinase that is ubiquitously expressed throughout human tissues. PDK1 phosphorylates protein kinase B (PKB or Akt) at both Thr308 and Ser473 in vivo. PDK1 is active and phosphorylated in basal conditions, where it exists predominantly in the cytosol with a small fraction at the plasma membrane. This membrane association is likely mediated by PDK1 binding to phospholipids through its PH domain, which has been found to have strong affinity to specific phospholipids. PDK1 is a master regulator of at least 23 related protein kinases, and more than 50% of all human cancers show significant overstimulation of the PDK1 pathway. Most small-molecule inhibitors of PDK1 target the ATP binding site.

Product Info

Amount :	20 μ l / 200 μ l
Content :	1X PBS, 0.02% NaN ₃ , 50% Glycerol, 0.1% BSA
Storage condition :	Store at -20°C. Avoid repeated freeze and thaw cycles.

Application Note

1 μ g/mL - 0.001 μ g/mL. It is recommended that the reagent be titrated for optimal performance for each application. See product image legends for additional information.(0.5mg/ml)

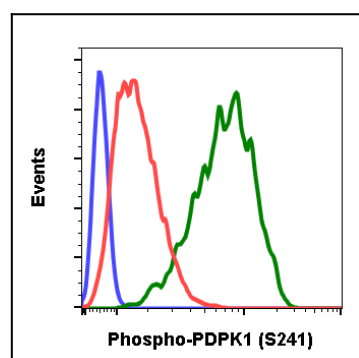


Fig-1: Flow cytometric analysis of 293T cells secondary antibody only negative control (blue) or treated with K252 (red) or with pervanadate (green) using Phospho-PDK1 (Ser241) antibody PDK1S241-F7 at 0.1 μ g/mL.

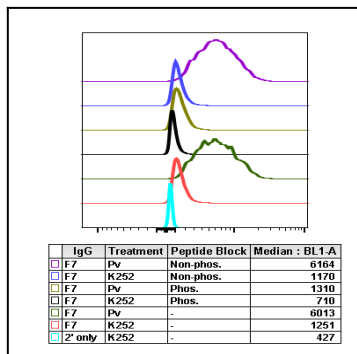


Fig 2 : Peptide blocking flow cytometric analysis of 293T cells secondary antibody only negative control (light blue) or treated with K252 (red) or with pervanadate (green) or K252 and blocked with phospho-peptide (black) or pervanadate and blocked with phospho peptide (gold) or K252 and blocked with non-phospho peptide (dark blue) or pervanadate and blocked with non-phospho peptide (purple) using Phospho-NDRG1 (Thr346) antibody PDPK1S241-F7 at 0.1 µg/mL.