

12-4097: Phospho-PLCg1 (Tyr783) (Clone: C4) rabbit mAb PE conjugate

Clonality :	Monoclonal
Clone Name :	PLCG1Y783-C4
Application :	FACS
Reactivity :	Human
Conjugate :	PE
Alternative Name :	1-phosphatidylinositol 4,5-bisphosphate phosphodiesterase gamma-1, PLC-148, Phosphoinositide phospholipase C-gamma-1, Phospholipase C-II, Phospholipase C-gamma-1, PLC-gamma-1, PLC1
Isotype :	Rabbit IgG1k
Immunogen Information :	A synthetic phospho-peptide corresponding to residues surrounding Tyr783 of human phospho PLCg1.

Description

The Phospholipase C (PLC) isozymes hydrolyze phosphatidyl inositol phosphate to inositol triphosphate and diacylglycerol. In response to extracellular stimuli such as hormones, growth factors and neurotransmitters, PLC hydrolyzes phosphatidylinositol 4,5-bisphosphate (PIP₂) to generate diacylglycerols (DAGs) and water-soluble phosphorylated derivatives, such as inositol 1,4,5-triphosphate (IP₃). Within the PLC family, PLCg is the only member that contains SH2 and SH3 domains, necessary for phospho PLCg activation. Phospho PLCg, upon activation, can interact with receptor tyrosine kinases.

Product Info

Amount :	10 Tests / 100 Tests
Content :	1X PBS, 0.09% NaN ₃ , 0.2% BSA
Storage condition :	Store at 2-8°C. Avoid repeated freeze and thaw cycles.

Application Note

For flow cytometric staining, the suggested use of this reagent is 5 µL per million cells or 5 µL per 100 µL of staining volume. It is recommended that the reagent be titrated for optimal performance for each application.

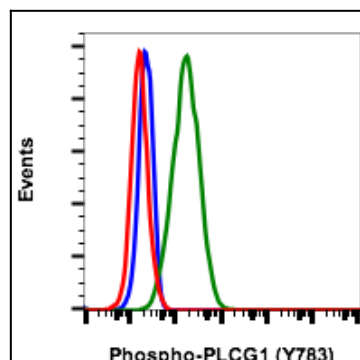


Fig-1: Flow cytometric analysis of HeLa cells unstained imatinib treated (blue) or stained treated with imatinib (red) or with pervanadate (green) using phospho-PLCg1 (Tyr783) antibody PLCg1Y783-C4 PE conjugate.