

12-4070: Phospho-EGFR (Tyr1068) (Clone: E5) rabbit mAb FITC conjugate

Clonality :	Monoclonal
Clone Name :	EGFRY1068-E5
Application :	FACS
Reactivity :	Human, Mouse, Rat
Conjugate :	FITC
Format :	Conjugated
Alternative Name :	avian erythroblastic leukemia viral (v-erb-b) oncogene homolog; cell growth inhibiting protein 40; cell proliferation-inducing protein 61; EGFR; Epidermal growth factor receptor; epidermal growth factor receptor (erythroblastic leukemia viral (v-erb-b) oncogene homolog, avian); ERBB; ERBB1; HER1; mENA; PIG61; Proto-oncogene c-ErbB-1; Receptor tyrosine-protein kinase erbB-1
Isotype :	Rabbit IgG1k
Immunogen Information :	A synthetic phospho-peptide corresponding to residues surrounding Tyr1068 of human phospho EGFR.

Description

The epidermal growth factor receptor (EGFR; ErbB-1; HER1 in humans) is a transmembrane protein that is a receptor for members of the epidermal growth factor family (EGF family) of extracellular protein ligands (1). EGFR (erbB-1) is closely related to other members of the ErbB family of receptors: HER2/neu(ErbB-2), HER3 (ErbB-3) and HER4 (ErbB-4). In many cancer types, mutations affecting EGFR expression or activity could result in cancer (2). Overexpression of EGFR is associated with the development of a wide variety of tumors. Interruption of EGFR signaling, either by blocking EGFR binding sites on the extracellular domain of the receptor or by inhibiting intracellular tyrosine kinase activity, can prevent the growth of EGFR-expressing tumors and improve the patient's condition. EGFR is activated by the binding of its ligands including EGF and dimerization stimulates its intrinsic intracellular protein-tyrosine kinase activity. Activation of EGFR leads to autophosphorylation of tyrosine (Tyr) residues; Tyr992, Tyr1045, Y1068, Tyr1148, and Tyr1173 in the C-terminal domain.

Product Info

Amount :	10 Tests / 100 Tests
Content :	1X PBS, 0.09% NaN ₃ , 0.2% BSA
Storage condition :	Store at 2-8°C. Avoid repeated freeze and thaw cycles.

Application Note

For flow cytometric staining, the suggested use of this reagent is 5 μ L per million cells or 5 μ L per 100 μ L of staining volume. It is recommended that the reagent be titrated for optimal performance for each application.

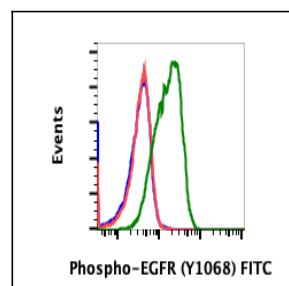


Fig-1: Flow cytometric analysis of K562 cells unstained cells negative control (blue) or stained and untreated (red) or treated with EGF and pervanadate (green) using Phospho-EGFR (Tyr1068)-FITC antibody EGFRY1068-E5-FITC.