

12-4050: Phospho-Rb (Ser807/811) (Clone: D9) rabbit mAb

Clonality :	Monoclonal
Clone Name :	RbS807S811-D9
Application :	FACS, WB
Reactivity :	Human, Mouse
Conjugate :	Unconjugated
Format :	Purified
Alternative Name :	Retinoblastoma-associated protein, p105-Rb, pRb, pp110
Isotype :	Rabbit IgG1k
Immunogen Information :	A synthetic phospho-peptide corresponding to residues surrounding Ser807/Ser811 of human phospho Rb

Description

Retinoblastoma protein (Rb, phospho Rb) is a tumor suppressor protein that is inactivated in a number of diverse cancers. The antiproliferative activity of Rb is mediated by its ability to inhibit the transcription of genes that are required for cell cycle progression. Rb contains conserved sites that are phosphorylated by cyclin-dependent kinases (CDKs). CDK phosphorylation typically promotes protein-protein interactions through creation of a phospho-epitope that becomes structured upon binding its target. However Rb phosphorylation disrupts interactions with its binding partners. When it is phosphorylated, phospho Rb is inactivated and allows excessive cell growth that is seen in cancer cells. Sixteen potential sites for CDK-mediated phosphorylation exist in Rb and twelve of these sites have been shown to be phosphorylated in vivo.

Product Info

Amount :	20 μ l / 200 μ l
Content :	1X PBS, 0.02% NaN ₃ , 50% Glycerol, 0.1% BSA
Storage condition :	Store at -20°C. Avoid repeated freeze and thaw cycles.

Application Note

Use 1 μ g/mL for flow cytometry and 0.1 μ g/mL for western blotting. (0.5mg/ml, more than 200 western blots)

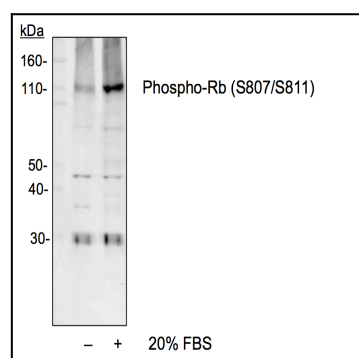


Fig-1: Flow cytometric analysis of U937 cells untreated and unstained as negative control (blue) or untreated and stained (green) or treated with lambda phosphatase and stained (red) using Phospho-Rb (Ser807/811) antibody RBS807S811-D9. at 1 μ g/mL.

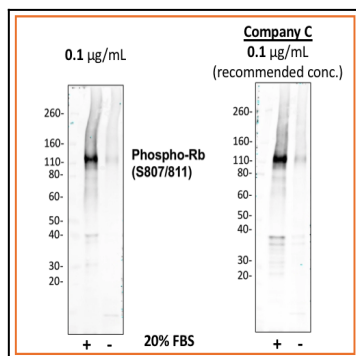


Fig 2 : Western blot analysis of 3T3 cell extract untreated or treated with 20% FBS using 0.01 µg/mL Phospho-Rb (Ser807/811) antibody RbS807S811-D9 or Company C antibody at 0.1 µg/mL (manufacturer's recommended concentration) developed using the same exposure.

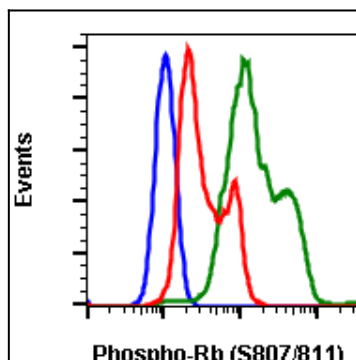


Fig-3: Western blot analysis of NIH3T3 cell extract untreated or treated with 20% FBS using Phospho-Rb (Ser807/Ser811) antibody RbS807S811-D9 at 0.1 µg/mL.