

12-4026: Phospho-PLC γ 2 (Tyr759) (Clone: G3) rabbit mAb PE conjugate

Clonality :	Monoclonal
Clone Name :	PLCG2Y759-G3
Application :	FACS
Reactivity :	Human, Mouse
Conjugate :	PE
Format :	Conjugated
Alternative Name :	1-phosphatidylinositol 4,5-bisphosphate phosphodiesterase gamma-2, Phosphoinositide phospholipase C-gamma-2, PLC-IV, PLC-gamma-2, PLCG2
Isotype :	Rabbit IgG1k
Immunogen Information :	A synthetic phospho-peptide corresponding to residues surrounding Tyr759 of human phospho PLC γ 2.

Description

The PLC-gamma isoforms of the PI-PLC family of lipases are regulated by growth factor receptors and B- and T-cell antigen receptors. While PLC γ 1 is expressed ubiquitously, PLC γ 2 is predominantly expressed in liver cells. PLC γ 2 plays a dominant role in B-cell signaling. Btk directly phosphorylates PLC γ 2, though the Syk kinase and BLNK adaptor protein are required. Both Tyr753 and Tyr759 have been identified as important phosphorylation sites for PLC γ 2 activation in B-cells. PLC γ 2 missense mutations and genomic deletions have been identified in autoimmune diseases in humans. These include gain-of-function mutations, such as S707T, that possibly introduce an additional phosphorylation site and increase basal PLC γ 2 activity.

Product Info

Amount :	10 Tests / 100 Tests
Content :	1X PBS, 0.09% NaN ₃ , 0.2% BSA
Storage condition :	Store at 2-8°C. Avoid repeated freeze and thaw cycles.

Application Note

For flow cytometric staining, the suggested use of this reagent is 5 μ L per million cells or 5 μ L per 100 μ L of staining volume. It is recommended that the reagent be titrated for optimal performance for each application.

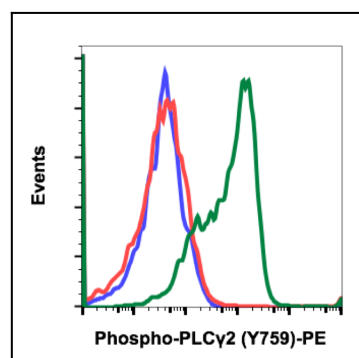


Fig-1: Flow cytometric analysis of Ramos cells unstained treated with imatinib (blue) or stained and treated with imatinib (red) or treated with pervanadate (green) using phospho-PLC γ 2 (Tyr759) antibody PLCG2Y759-G3 PE conjugate.