

12-4019: Phospho-Stat6 (Tyr641) (Clone: G12) rabbit mAb SureLight 488 conjugate

Clonality :	Monoclonal
Clone Name :	Stat6Y641-G12
Application :	FACS
Reactivity :	Human, Mouse
Conjugate :	SureLight 488
Format :	Conjugated
Alternative Name :	Signal transducer and activator of transcription 6, IL-4 Stat
Isotype :	Rabbit IgG1k
Immunogen Information :	A synthetic phospho-peptide corresponding to residues surrounding Tyr641 of human phospho Stat6

Description

The transcription factor Stat6 is a member of the signal transducers and activators of transcription (STAT) family of proteins. Stat6 is the only member of this family that is activated by interleukin-4 (IL-4), after which Stat6 is both tyrosine- and serine-phosphorylated by Jak kinases. The consensus Stat6 binding site TTCN4GAA is found in the promoters of many genes regulated by IL-4. In T lymphocytes, Stat6 is required for differentiation into Th2 cells in response to IL-4. Stat6 may play a role in solid tumorigenesis; a large immunohistochemistry study of Stat6 expression in over 2,000 tumor samples confirmed strong nuclear staining.

Product Info

Amount :	10 Tests / 100 Tests
Content :	1X PBS, 0.09% NaN ₃ , 0.2% BSA
Storage condition :	Store at 2-8°C. Avoid repeated freeze and thaw cycles.

Application Note

For flow cytometric staining, the suggested use of this reagent is 5 μ L per million cells or 5 μ L per 100 μ L of staining volume. It is recommended that the reagent be titrated for optimal performance for each application.

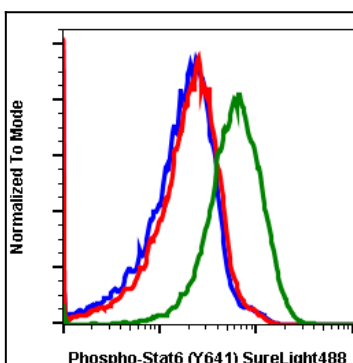


Fig-1: Flow cytometric analysis of U937 cells untreated cells stained with secondary antibody as negative control (blue) or untreated (red) or treated with IFN α and IL-4 (green) using Phospho-Stat6 (Tyr641)-SureLight 488 antibody STAT6Y641-G12 SureLight 488.