

## 12-4004: Anti SARS-CoV-2 Nucleocapsid rabbit mAb (Clone:85C1)

<b>Clonality :</b>	Monoclonal
<b>Clone Name :</b>	85C1
<b>Application :</b>	ELISA
<b>Conjugate :</b>	Unconjugated
<b>Gene :</b>	N
<b>Gene ID :</b>	43740575
<b>Uniprot ID :</b>	P0DTC9
<b>Format :</b>	Purified
<b>Isotype :</b>	Rabbit IgG1 k
<b>Immunogen Information :</b>	SARS-CoV-2 nucleoprotein (NP) specific peptide.

### Description

SARS-CoV-2 Nucleocapsid antibodies, which include clones 85C1, 75G5a, 84C4a, and 84D7 can be paired in sandwich detection assays and used to detect nucleoprotein (NP) antigen from SARS-CoV-2. These antibodies do not cross-react to the highly related SARS-CoV virus or to any other coronaviruses tested. Sandwich ELISA detection using TMB/acid developer reliably detects NP antigen in the pg/mL range, and sensitivity is expected to be even higher when using more sensitive developer strategies. This panel of antibodies can be used as raw materials for diagnostic kits and can be applied to lateral flow systems for diagnostic detection of COVID-19.

### Product Info

<b>Amount :</b>	200 $\mu$ L (0.5 mg/mL)
<b>Purification :</b>	Protein A Chromatography
<b>Content :</b>	1X PBS, 0.02% NaN <sub>3</sub>
<b>Storage condition :</b>	Store at -20°C. Avoid repeated freeze and thaw cycles.

### Application Note

Used for specific, high-sensitivity detection of SARS-CoV-2 nucleocapsid protein (NP) in immunoassay. Can be paired with other NP-specific clones for detection in sandwich ELISA format.

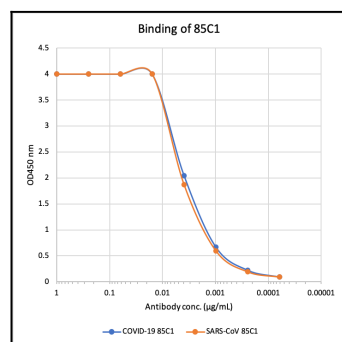


Figure 1: Microtiter wells were coated with SARS-CoV-2 (COVID-19) Nucleocapsid Protein (NP) and SARS-CoV NP at 1  $\mu$ g/mL. Anti SARS-CoV-2 Nucleocapsid rabbit mAb (Clone:85C1) (Cat# 12-4004) was serially diluted 1:2 starting at 1  $\mu$ g/mL. Rabbit monoclonal antibody 85C1 show very strong and specific binding to both COVID-19 NP antigen and to SARS-CoV NP antigen.

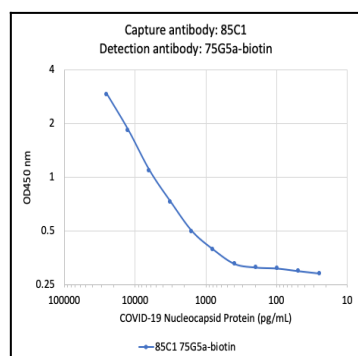


Figure 2: A sandwich ELISA was performed using SARS-CoV-2 (COVID-19) Anti SARS-CoV-2 nucleocapsid rabbit monoclonal antibodies 85C1 (Cat# 12-4004) as a capture antibody and 75G5a-biotin (Cat# 12-4001-B) as a detection antibody. COVID-19 NP was serially diluted 1:2 starting at 25 ng/mL. Rabbit monoclonal antibodies 85C1 and 75G5a-biotin detected COVID-19 NP antigen at very high sensitivity, as low as 25 pg/mL (2.5 pg).

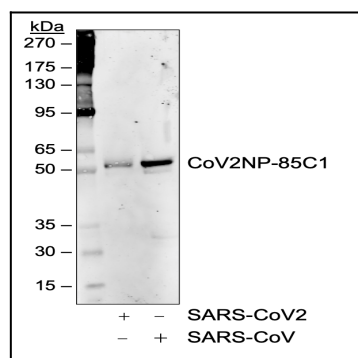


Figure 3: Western blot analysis of 50 ng of SARS-CoV2 and SARS-CoV nucleocapsid protein probed with 1 ug/mL anti-SARS-CoV-2 nucleocapsid rabbit monoclonal antibody 85C1 (Cat# 12-4004).