

11-2004-B: Polyclonal Antibody to SARS-CoV-2 nucleocapsid Protein Biotin Conjugated

Clonality :	Polyclonal
Application :	ELISA,WB
Conjugate :	Biotin
Format :	Purified
Isotype :	Rabbit IgG
Immunogen Information :	SARS-CoV-2/COVID-19 Nucleocapsid (Ser2-Ala419) with His-tag in N-terminal was used as the immunogen for this antibody.

Description

The structural nucleocapsid (N) protein of nCoV/SARS-CoV-2/COVID-19 is a predicted 46 kDa phosphoprotein having 419 amino acid residues. A short Serine rich stretch and a recognized nuclear localization signal are the unique features of the nucleocapsid protein of nCoV/SARS-CoV-2/COVID-19, which seems to have a little homology with the proteins of other members of this large corona virus family. These features also suggest the involvement of nucleocapsid protein of nCoV/SARS-CoV-2/COVID-19 in different stages of viral lifecycle. The protein has multifaceted activities including packing of the nCoV/SARS-CoV-2/COVID-19 viral genome into a helical ribonucleocapsid (RNP) and playing an important role in viral self-assembly causing nCoV/SARS-CoV-2/COVID-19. The nucleocapsid protein of nCoV/SARS-CoV-2/COVID-19 also forms dimer in the cell by self-association with the help of interactive C terminal domain.

Product Info

Amount :	100 µg
Purification :	Protein A Chromatography
Content :	25 µg in 50 µl/100 µg in 200 µl PBS containing 0.05% sodium azide. Sodium azide is highly toxic.
Storage condition :	Store the antibody at 4°C, stable for 6 months. For long-term storage, store at -20°C. Avoid repeated freeze and thaw cycles.

Application Note

Recommended dilutions: WB: 1-2 µg/ml. ELISA : 2 µg/ml. However, this need to be optimized based on the research applications.

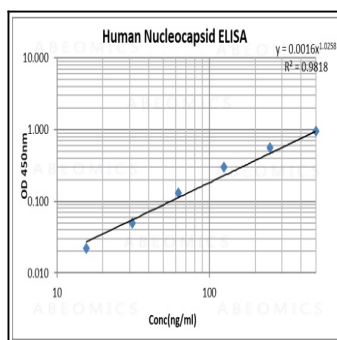


Figure 1: ELISA analysis of Nucleocapsid antibody (SARS-CoV-2) 11-2004Biotin was used as detection antibody.

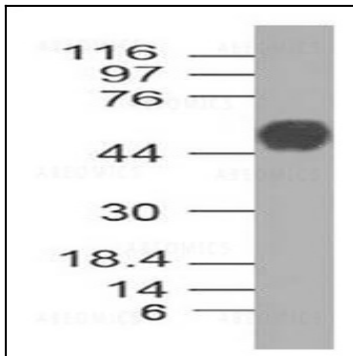


Figure-2: Western Blot analysis of Nucleocapsid antibody (SARS-CoV-2): Anti-Nucleocapsid antibody (SARS-CoV-2) cat no.11-2004B was used at 1 μ g/ml on recombinant Nucleocapsid Protein (Cat#21-1003).