

## 10-7665: Monoclonal Antibody to Glutamate-Cysteine Ligase Regulatory Subunit /GCLM (Clone: ABM2F9.1A7)

<b>Clonality :</b>	Monoclonal
<b>Clone Name :</b>	ABM2F9.1A7
<b>Application :</b>	WB
<b>Reactivity :</b>	Human
<b>Gene :</b>	GCLM
<b>Gene ID :</b>	2730
<b>Uniprot ID :</b>	P48507
<b>Format :</b>	Purified
<b>Alternative Name :</b>	GCS light chain, Gamma-ECS regulatory subunit, Gamma-glutamylcysteine synthetase regulatory subunit, Glutamate--cysteine ligase modifier subunit
<b>Isotype :</b>	Mouse IgG1, Kappa

### Product Info

<b>Amount :</b>	25 µg / 100 µg
<b>Purification :</b>	Protein G Chromatography
<b>Content :</b>	25 µg in 50 µl/100 µg in 200 µl PBS containing 0.05% BSA and 0.05% sodium azide. Sodium azide is highly toxic.
<b>Storage condition :</b>	Store the antibody at 4°C; stable for 6 months. For long-term storage; store at -20°C. Avoid repeated freeze and thaw cycles

### Application Note

Recommended dilutions:WB: 1-2 µg/ml. However, this need to be optimized based on the research applications.

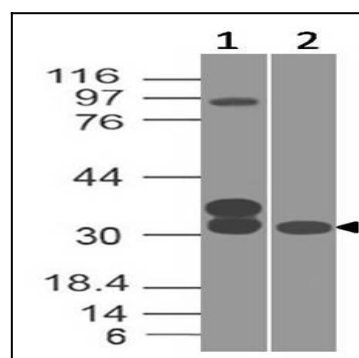


Figure:1- Western blot analysis of GCLM. Anti-GCLM antibody (Clone: ABM2F9.1A7) was tested at 1 µg/ml on (1) h SKM and (2) HT-29 lysates.