

29-1005-B: Anti-ACE2 (human), mAb (Clone: AC384) Biotinylated

Clonality :	Monoclonal
Clone Name :	AC384
Application :	ELISA,WB
Reactivity :	Human
Conjugate :	Biotin
Alternative Name :	SARS Receptor; Angiotensin-converting Enzyme 2; ACEH; Metalloprotease MPROT15; SARS-CoV-2 Receptor
Isotype :	Mouse IgG1 k
Immunogen Information :	Recombinant human ACE2.

Description

Angiotensin-converting enzyme2 (ACE2) is an ectoenzyme (carboxypeptidase) with an extracellular catalytic domain that predominantly localizes at the plasma membrane and is thereby able to hydrolyze circulating peptides. ACE2 has approximately 42% sequence identity with ACE, and its cytoplasmic and transmembrane domains show 48% homology to the protein collectrin that plays a critical role in the amino acid absorption of the kidney. ACE2 converts angiotensin I to angiotensin 1-9, a peptide of unknown function, and angiotensin II to angiotensin 1-7, a vasodilator. ACE2 is involved in the regulation of systemic blood pressure and has direct effects on cardiac functions. It is expressed predominantly in endothelial cells of the lung, gut, heart and kidney. ACE2 together with the protease TMPRSS2 acts as a functional receptor for SARS coronavirus as well as for the new highly pathogenic coronavirus, 2019-nCoV/SARS-CoV-2, which is cause for pneumonia COVID-19.

Product Info

Amount :	50 µg
Purification :	Protein G-affinity purified.
Content :	1mg/ml. Liquid. 0.2µm-filtered solution in PBS, pH 7.4. Contains no preservatives.
Storage condition :	Short Term Storage +4°C. Long Term Storage -20°C. After opening, prepare aliquots and store at -20°C. Avoid freeze/thaw cycles. Stable for at least 1 year after receipt when stored at -20°C.

Application Note

ELISA: (direct or indirect: 1:2'000-1:10'000)

Western blot: (1:2'000-1:10'000 using ECL. Suggested blocking and dilution buffer is PBST with 0.05% Tween 20 and 5% skim milk. Suggested incubation time is 1 hour at room temperature).

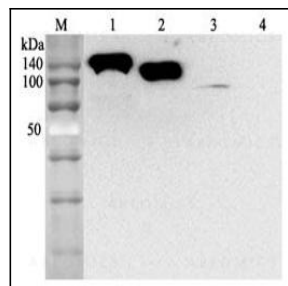


Figure 1: Western blot analysis using anti-ACE2 (human), mAb (AC384) at 1:2'000 dilution. 1: Human ACE2 Fc-fusion protein. 2: Human ACE2 (Ecto domain) (FLAG®-tagged). 3: HepG2 cell lysate. 4: Other Fc-fusion (hGITR-Fc) proteins (negative control).