

## 32-18004: SARS-CoV-2 Spike protein (ECD, His and Flag Tag) C-Terminus

**Application :** Functional Assay,ELISA,WB

**Format :** Purified

### Description

**Source: Sf9 insect cells.** SARS-CoV-2 (Severe Acute Respiratory Syndrome Coronavirus 2) also known as 2019-nCoV (2019 Novel Coronavirus) is a virus that causes illnesses ranging from the common cold to severe diseases. SARS-CoV-2 Spike Protein is composed of S1 domain and S2 domain. S1 contains a receptor-binding domain (RBD) that can specifically bind to angiotensin-converting enzyme 2 (ACE2), the receptor on target cells. ECD is the extra cellular domain of spike protein. Predicted molecular weight 135 kDa.

### Product Info

**Amount :** 100  $\mu$ g / 1 mg

**Purification :** > 90% as analyzed by SDS-PAGE

**Content :** PBS PH 7.2 containing 10% glycerol

**Storage condition :** The product can be stored at -20°C or below. Avoid repeated freezing and thawing cycles. The shelf life of the product is unspecified.

### Application Note

ELISA, WB: 2  $\mu$ g. SARS-CoV-2 Spike protein (ECD) can bind with Human ACE2 in functional ELISA assay.

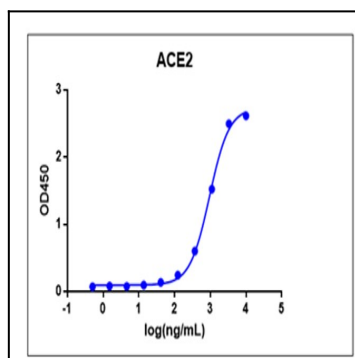


Figure-1:SARS-CoV-2 Spike protein (ECD) can bind with Human ACE2 in functional ELISA assay.

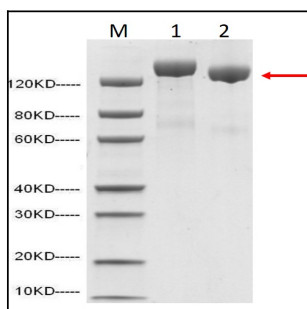


Figure-2: Lane-1: 2  $\mu$ g of S-ECD protein, reducing (R) and Lane-2: 2  $\mu$ g of S-ECD protein, non-reducing (N). > 90% as analyzed by SDS-PAGE.