

36-1634: Monoclonal Antibody to Cyclin D1 (G1-Cyclin & Mantle Cell Marker)(Clone : DCS-6)-PE

Clonality :	Monoclonal
Clone Name :	DCS-6
Application :	FACS,IF
Reactivity :	Human, Mouse, Rat
Conjugate :	PE
Gene :	CCND1
Gene ID :	595
Uniprot ID :	P24385
Format :	Purified
Alternative Name :	CCND1,BCL1,PRAD1
Isotype :	Mouse IgG2a, kappa
Immunogen Information :	Human recombinant full length cyclin D1 protein

Description

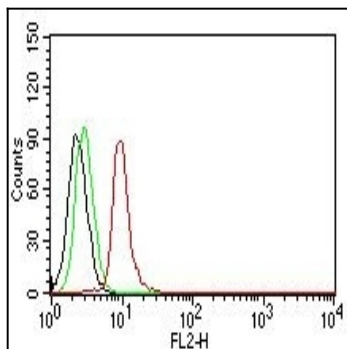
Recognizes a protein of 36kDa, identified as cyclin D1. Cyclin D1, one of the key cell cycle regulators, is a putative proto-oncogene overexpressed in a wide variety of human neoplasms. This antibody neutralizes the activity of cyclin D1 in vivo. About 60% of mantle cell lymphomas (MCL) contain a t(11; 14)(q13; q32) translocation resulting in over-expression of cyclin D1. This antibody is useful in identifying mantle cell lymphomas (cyclin D1 positive) from CLL/SLL and follicular lymphomas (cyclin D1 negative). Occasionally, hairy cell leukemia and plasma cell myeloma weakly express Cyclin D1.

Product Info

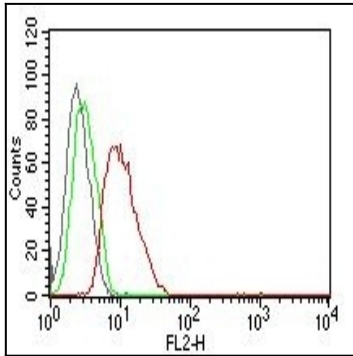
Amount :	0.5 ml
Purification :	Affinity Chromatography
Content :	PE conjugated Cyclin D1 Prepared in 10mM PBS with 0.05% BSA and 0.05% azide.
Storage condition :	Store the antibody at 4°C; stable for 6 months.

Application Note

Flow Cytometry (5ul per test per one million cells or 5ul per 100ul of whole blood);Immunofluorescence (1:50-1:100 for 30 minutes at RT)



Flow Cytometry of human Cyclin D1 on Jurkat Cells. Black: Cells alone; Green: Isotype Control; Red: PE-labeled Cyclin D1 Monoclonal Antibody (DCS-6).



Flow Cytometry of human Cyclin D1 on MCF-7 Cells. Black: Cells alone; Green: Isotype Control; Red: PE-labeled Cyclin D1 Monoclonal Antibody (DCS-6).