

36-1631: Monoclonal Antibody to Retinol Binding Protein-1 (RBP1)(Clone : SPM442)

| | |
|--------------------------------|--|
| Clonality : | Monoclonal |
| Clone Name : | SPM442 |
| Application : | IF, WB, IHC |
| Reactivity : | Human, Rat, Mouse |
| Gene : | RBP4 |
| Gene ID : | 5950 |
| Uniprot ID : | P02753 |
| Format : | Purified |
| Alternative Name : | RBP4, PRO2222 |
| Isotype : | Mouse IgG1, kappa |
| Immunogen Information : | Retinol binding protein purified from human plasma |

Description

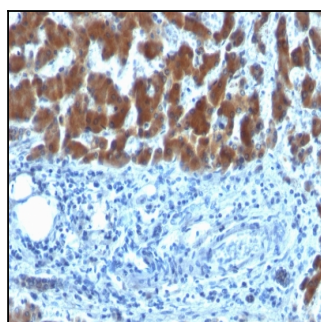
Recognizes a protein of 21kDa-25kDa, identified as retinol binding protein (RBP). Its epitope localizes between aa 74-182 of human RBP. This MAAb recognizes reduced and carboxy-methylated RBP (RCM-RBP) as well as the circulatory RBP but not the native RBP, thereby suggesting that its epitope becomes accessible either on unfolding or upon binding of RBP to transthyretin (prealbumin). RBP is responsible for distributing retinol from the retinoid stores in the liver to the various target tissues. Once secreted into the blood with bound retinol, the vitamin carrier circulates complexed with transthyretin prior to vitamin delivery at the plasma membrane through a receptor-mediated mechanism.

Product Info

| | |
|----------------------------|---|
| Amount : | 100 µg |
| Purification : | Affinity Chromatography |
| Content : | 100 µg in 500 µl PBS containing 0.05% BSA and 0.05% sodium azide. Sodium azide is highly toxic. |
| Storage condition : | Store the antibody at 4°C; stable for 6 months. For long-term storage; store at -20°C. Avoid repeated freeze and thaw cycles. |

Application Note

Immunofluorescence (1-2ug/ml); Western Blot (1-2ug/ml); Immunohistochemistry (Formalin-fixed) (1-2ug/ml for 30 minutes at RT)(Staining of formalin-fixed tissues requires heating tissue sections in 10mM Tris with 1mM EDTA, pH 9.0, for 45 min at 95°C followed by cooling at RT for 20 minutes);



Formalin-fixed, paraffin-embedded human Hepatocellular Carcinoma stained with RBP1 (SPM442)