

10-7562-BAF: Monoclonal Antibody to Human PD-L1 (Clone: ABM4E54) (BSA/AZIDE Free)

Clonality :	Monoclonal
Clone Name :	ABM4E54
Application :	IHC,FACS,WB
Reactivity :	Human
Gene :	CD274
Gene ID :	29126
Uniprot ID :	Q9NZQ7
Format :	Purified
Alternative Name :	CD274,B7H1,PDCD1L1,PDCD1LG1,PDL1
Isotype :	Mouse IgG2a Kappa
Immunogen Information :	A partial length recombinant PDL1 protein (amino acids 18-227) was used as the immunogen for this antibody.

Description

PD-L1 (CD274/B7-H1) is a critical membrane-bound costimulatory molecule belonging to the B7 superfamily that inhibits immune responses through its receptor, PD-1. PD-L1 plays a key role in the pathogenesis of inflammatory diseases (programmed death 1). It is widely expressed in the mononuclear phagocyte system (MPS), may co-stimulate T cells, and regulates inflammatory responses. PD-L1 exerts inflammation regulatory functions via a negative co-stimulatory effect on T cell functions to inhibit cytokine secretion, facilitate apoptosis of activated T cells, and induce T cell anergy. Aberrant expression and dysregulation of CD274 have been reported during bacterial infection, inflammation, and in numerous autoimmune diseases.

Product Info

Amount :	25 µg / 100 µg
Purification :	Protein G Chromatography
Content :	25 µg in 50 µl/100 µg in 200 µl PBS (sterile filtered), BSA, Glycerol and Sodium azide free.
Storage condition :	Store the antibody at 4°C; stable for 6 months. For long-term storage; store at -20°C. Avoid repeated freeze and thaw cycles.

Application Note

Western blot analysis: 2-4 µg/ml; Immunohistochemical analysis-5-10 µg/ml; FACS: 1-2 µg/ml

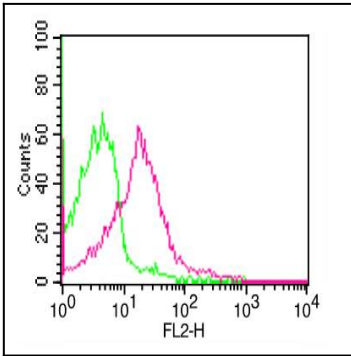


Figure-1: Cell Surface FLOW analysis of PD-L1 in PHA treated human PBMC using 1 μ g of PD-L1 antibody (Clone: ABM4E54). Green represents isotype control; red represents anti-PD-L1 antibody. Goat anti-mouse PE conjugate was used as secondary antibody.

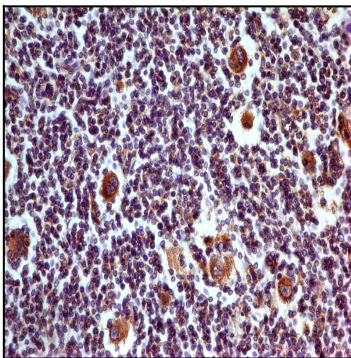


Figure-2: Immunohistochemical analysis of PD-L1 in Hodgkin's Lymphoma tissue using PD-L1 antibody (Clone: ABM4E54) at 5 μ g/ml..

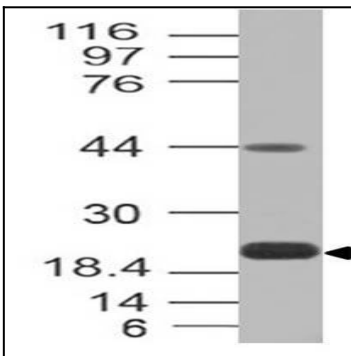


Figure-3: Western blot analysis of PD-L1. Anti-PD-L1 antibody (Clone: ABM4E54) was tested at 0.5 μ g/ml on Recombinat lysates.

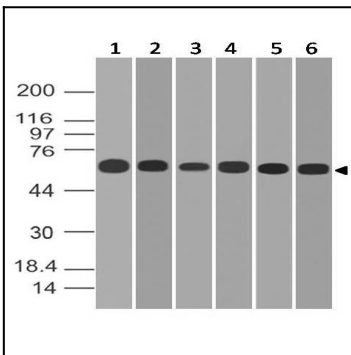


Figure-4: Western blot analysis of PD-L1. Anti-PD-L1 antibody (Clone: ABM4E54) was tested at 2 μ g/ml on (1) A549, (2) MCF-7, (3) 293, (4) HCT-116, (5) Saos2 and (6) Hela lysates.

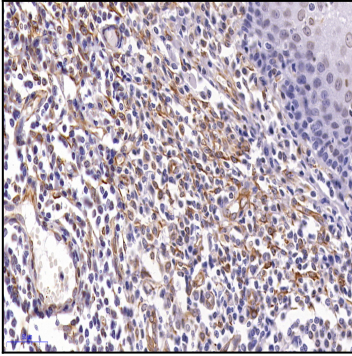


Figure-5: Immunohistochemical analysis of PD-L1 in Human Tonsil tissue using PD-L1 antibody (Clone: ABM4E54) at 5 $\mu\text{g/ml}$.

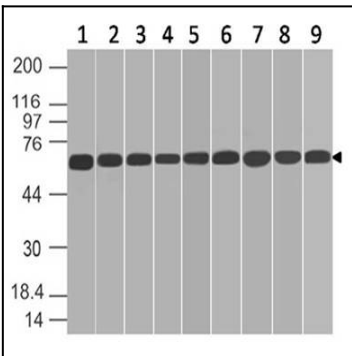


Figure-6: Western blot analysis of PD-L1. Anti-PD-L1 antibody (Clone: ABM4E54) was tested at 0.5 $\mu\text{g/ml}$ on (1) HepG2, (2) SKBR3, (3) A431, (4) THP1, (5) NCCIT, (6) PC3, (7) PANC-1, (8) U87 and (9) KATO-111 lysates.

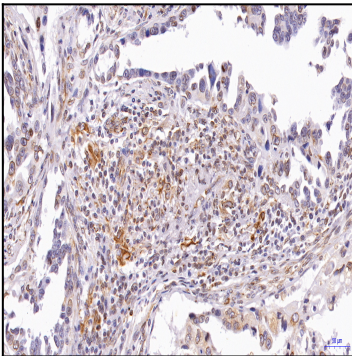


Figure-7: Immunohistochemical analysis of PD-L1 in Human Lung Cancer tissue using PD-L1 antibody (Clone: ABM4E54).

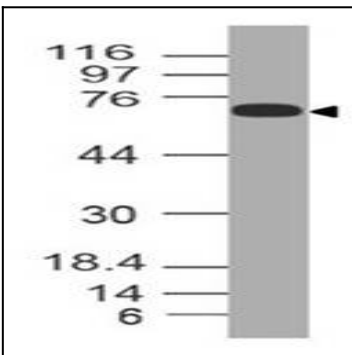


Figure-8: Western blot analysis of PD-L1. Anti-PD-L1 antibody (Clone: ABM4E54) was tested at 2 $\mu\text{g/ml}$ on h Spleen lysate.