

## 36-3812: Anti-Bromodeoxyuridine (BrdU) (Proliferation Marker) Monoclonal Antibody(Clone: BRD/1539R)

<b>Clonality :</b>	Monoclonal
<b>Clone Name :</b>	BRD/1539R
<b>Application :</b>	ELISA
<b>Reactivity :</b>	All species
<b>Alternative Name :</b>	Bromodeoxyuridine, BUdr
<b>Isotype :</b>	Rabbit IgG
<b>Immunogen Information :</b>	Bromodeoxyuridine (BrdU) conjugated to KLH

### Description

It reacts with Bromodeoxyuridine (BrdU) in single stranded DNA (produced by partial denaturation of double stranded DNA), BrdU coupled to a protein carrier, as well as free BrdU. BrdU is a thymidine analog, incorporated into cell nuclei during DNA synthesis prior to mitosis. Antibody to BrdU is helpful in detecting S-phase cells, providing useful information on the aggressiveness of tumors.

### Product Info

<b>Amount :</b>	20 µg / 100 µg
<b>Content :</b>	200 µg/ml of Ab Purified from Bioreactor Concentrate by Protein A/G. Prepared in 10mM PBS with 0.05% BSA & 0.05% azide. Also available WITHOUT BSA & azide at 1.0mg/ml.
<b>Storage condition :</b>	Antibody with azide - store at 2 to 8°C. Antibody without azide - store at -20 to -80°C. Antibody is stable for 24 months. Non-hazardous.

### Application Note

ELISA (For coating, order antibody without BSA),

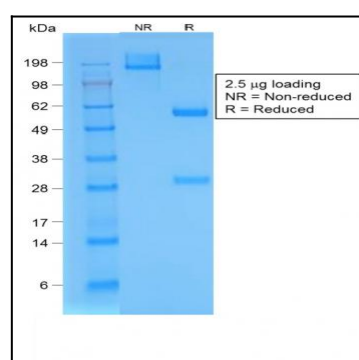


Fig. 1: SDS-PAGE Analysis Purified BrdU Rabbit Recombinant Monoclonal Antibody (BRD/1539R). Confirmation of Purity and Integrity of Antibody.