

36-3810: Anti-Mitochondria (Marker for Human Cells, Granular RCC's & Salivary Tumors) Monoclonal Antibody(Clone: MTC02/2860R)

Clonality :	Monoclonal
Clone Name :	MTC02/2860R
Application :	IHC
Reactivity :	Human
Isotype :	Rabbit IgG
Immunogen Information :	Semi-Purified mitochondrial preparation

Description

This MAb recognizes a 60kDa antigen associated with the mitochondria in human cells. It can be used to stain mitochondria in cell or tissue preparations and can be used as a mitochondrial marker in subcellular fractions. It produces a spaghetti-like pattern in normal and malignant cells. This antibody is an excellent marker for human cells in xenographic model research. It reacts specifically with human cells, including neurons and embryonic stem cells. Immunostaining pattern with anti-mitochondrial MAb has been reported as a useful discriminatory adjunct in the complex differential diagnosis of granular renal cell tumors. Reportedly, this MAb facilitates the classification of salivary tumors.

Product Info

Amount :	20 µg / 100 µg
Content :	200 µg/ml of Ab Purified from Bioreactor Concentrate by Protein A/G. Prepared in 10mM PBS with 0.05% BSA & 0.05% azide. Also available WITHOUT BSA at 1.0mg/ml.
Storage condition :	Antibody with azide - store at 2 to 8°C. Antibody is stable for 24 months. Non-hazardous.

Application Note

Immunohistochemistry (Formalin-fixed) (1-2ug/ml for 30 minutes at RT)(Staining of formalin-fixed tissues requires heating tissue sections in 10mM Tris buffer with 1mM EDTA, pH 9.0, for 45 min at 95°C followed by cooling at RT for 20 minutes)

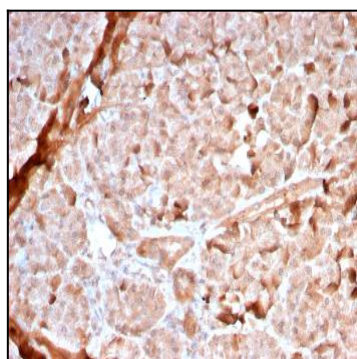


Fig. 1: Formalin-fixed, paraffin-embedded human Pancreas stained with Mitochondria Rabbit Recombinant Monoclonal Antibody (MTC02/2860R).

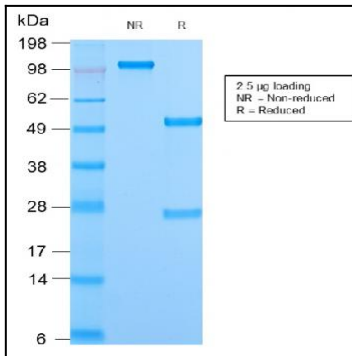


Fig. 2: SDS-PAGE Analysis Purified Mitochondria Rabbit Recombinant Monoclonal (MTC02/2860R). Confirmation of Purity and Integrity of Antibody.