

## 36-3806: Anti-Cytokeratin, Basic (Type II or HMW) Monoclonal Antibody(Clone: KRTH/2147R)

<b>Clonality :</b>	Monoclonal
<b>Clone Name :</b>	KRTH/2147R
<b>Application :</b>	FACS,IF,WB,IHC
<b>Reactivity :</b>	Human, Mouse, Rat
<b>Gene :</b>	KRT76
<b>Gene ID :</b>	51350
<b>Uniprot ID :</b>	Q01546
<b>Alternative Name :</b>	KRT2B; KRT2P; HUMCYT2A; Keratin, type II Cytoskeletal 2 oral; K76; Keratin 2p (K2P); Keratin-76; Cytokeratin-2P (CK-2P; Type-II Keratin Kb9
<b>Isotype :</b>	Rabbit IgG
<b>Immunogen Information :</b>	Solubilized keratin extract from human stratum corneum

### Description

This antibody recognizes CK1, CK5, CK10 and CK14. In normal epithelia, it stains stratified epithelia, myoepithelial cells and basal cells in the prostate gland and bronchi. This MAb shows no reactivity with hepatocytes, pancreatic acinar cells, proximal renal tubules, or endometrial glands; there is no reactivity with cells derived from simple epithelia. Mesenchymal tumors, lymphomas, melanomas, neural tumors, and neuroendocrine tumors are negative with this antibody. It stains myoepithelial cells and has been shown to be useful in distinguishing prostate adenocarcinoma from benign prostate. This antibody has also been useful in separating benign from malignant intraductal breast proliferations.

### Product Info

<b>Amount :</b>	20 µg / 100 µg
<b>Content :</b>	200 µg/ml of Ab Purified from Bioreactor Concentrate by Protein A/G. Prepared in 10mM PBS with 0.05% BSA & 0.05% azide. Also available WITHOUT BSA & azide at 1.0mg/ml.
<b>Storage condition :</b>	Antibody with azide - store at 2 to 8°C. Antibody without azide - store at -20 to -80°C. Antibody is stable for 24 months. Non-hazardous.

### Application Note

Flow Cytometry (1-2ug/million cells); Immunofluorescence (1-2 ug/ml); Western Blot (1-2ug/ml); Immunohistochemistry (Formalin-fixed) (0.25-0.5ug/ml for 30 min at RT)(Staining of formalin-fixed tissues requires heating tissue sections in 10mM Tris with 1mM EDTA, pH 9.0, for 45 min at 95&degC followed by cooling at RT for 20 minutes);

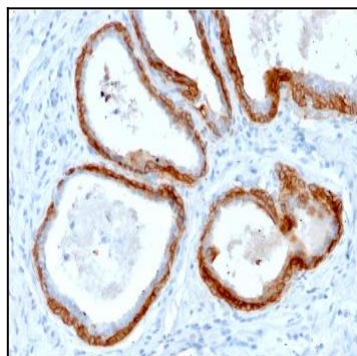


Fig. 1: Formalin-fixed, paraffin-embedded human Prostate Carcinoma stained with CK HMW Rabbit Recombinant Monoclonal Antibody (KRTH/2147R).

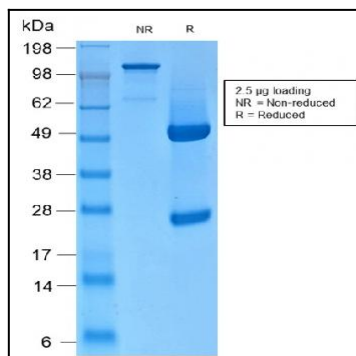


Fig. 2: SDS-PAGE Analysis of Purified CK HMW Rabbit Recombinant Monoclonal Antibody (KRTH/2147R). Confirmation of Integrity and Purity of Antibody.

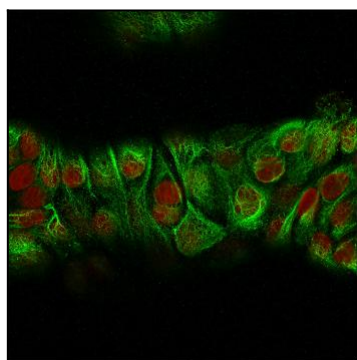


Fig. 3: Immunofluorescence Analysis of MeOH-fixed Human MCF-7 cells labeling CK with CK HMW Rabbit Recombinant Monoclonal Antibody (KRTH/2147R) followed by Goat anti-Mouse IgG-CF488 (Green). The nuclear counterstain is Reddot (Red).