

36-3800: Anti-CA19-9/Sialyl Lewis a (GI Tumor Marker) Monoclonal Antibody(Clone: CA19.9/1390R)

Clonality :	Monoclonal
Clone Name :	CA19.9/1390R
Application :	IHC
Reactivity :	Human
Alternative Name :	CA19.9, Ovarian tumor antigen, Pancreatic tumor antigen, Sialyl Lewis a
Isotype :	Rabbit IgG
Immunogen Information :	Purified human CA19-9 protein

Description

CA19-9, a carbohydrate epitope expressed on a high MW (400kDa) mucin glycoprotein, is a sialyl Lewis a structure which is synthesized from type 1 blood group precursor chains and is present in individuals expressing the Lewis a and/or Lewis b blood group antigens. In normal tissues, sialyl Lewis a antigen is present in ductal epithelium of the breast, kidney, salivary gland, and sweat glands. Its expression is greatly enhanced in serum as well as in the majority of tumor cells in gastrointestinal (GI) carcinomas, including adenocarcinomas of the stomach, intestine, and pancreas. Preoperative elevated CA19-9 levels in patients with stage I pancreatic carcinoma decrease to normal values following surgery. When used serially, CA19-9 can predict recurrence of disease prior to radiographic or clinical findings. This MAb is excellent for staining of formalin-fixed, paraffin-embedded tissues.

Product Info

Amount :	20 µg / 100 µg
Content :	200 µg/ml of Ab Purified by Protein A column. Prepared in 10mM PBS with 0.05% BSA & 0.05% azide. Also available WITHOUT BSA and Azide at 1.0mg/ml.
Storage condition :	Antibody with azide - store at 2 to 8°C. Antibody without azide - store at -20 to -80°C. Antibody is stable for 24 months. Non-hazardous.

Application Note

Immunohistochemistry (Formalin-fixed) (5-10ug/ml for 30 minutes at RT)(Staining of formalin-fixed tissues requires heating tissue sections in 10mM Tris with 1mM EDTA, pH 9.0, for 45 min at 95°C followed by cooling at RT for 20 minutes);

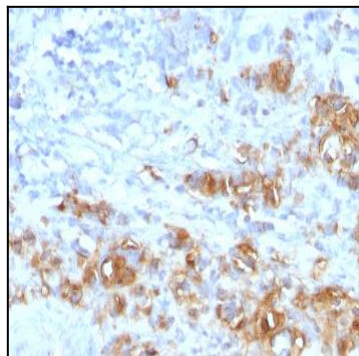


Fig. 1: Formalin-fixed, paraffin-embedded human Gastric Carcinoma stained with CA19-9 Rabbit Recombinant Monoclonal Antibody (CA19.9/1390R).

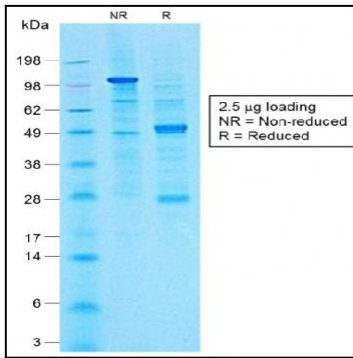


Fig. 2: SDS-PAGE Analysis of Purified CA19-9 Rabbit Monoclonal Antibody (CA19.9/1390R).