

36-3799: Anti-Bromodeoxyuridine (BrdU) (Proliferation Marker) Monoclonal Antibody(Clone: BRD2888R)

| | |
|--------------------------------|--|
| Clonality : | Monoclonal |
| Clone Name : | BRD2888R |
| Application : | IHC |
| Reactivity : | All species |
| Alternative Name : | Bromodeoxyuridine, BUdr |
| Isotype : | Rabbit IgG |
| Immunogen Information : | Bromodeoxyuridine (BrdU) conjugated to KLH |

Description

It reacts with Bromodeoxyuridine (BrdU) in single stranded DNA (produced by partial denaturation of double stranded DNA), BrdU coupled to a protein carrier, as well as free BrdU. BrdU is a thymidine analog, incorporated into cell nuclei during DNA synthesis prior to mitosis. Antibody to BrdU is helpful in detecting S-phase cells, providing useful information on the aggressiveness of tumors.

Product Info

| | |
|----------------------------|---|
| Amount : | 20 µg / 100 µg |
| Content : | 200 µg/ml of Ab Purified from Bioreactor Concentrate by Protein A/G. Prepared in 10mM PBS with 0.05% BSA & 0.05% azide. Also available WITHOUT BSA & azide at 1.0mg/ml. |
| Storage condition : | Antibody with azide - store at 2 to 8°C. Antibody without azide - store at -20 to -80°C. Antibody is stable for 24 months. Non-hazardous. |

Application Note

Immunohistochemistry (Formalin-fixed) (1-2ug/ml for 30 minutes at RT)[For staining of formalin-fixed tissues, incubate sections in 4N HCl for 30 minutes at RT followed by digestion with trypsin at 1mg/ml PBS, 10 min at 37oC (Cat. #AP-9008)]

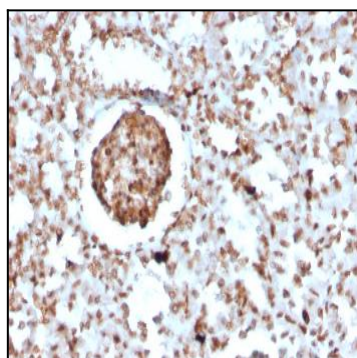


Fig. 1: Formalin-fixed, paraffin-embedded Mouse BrdU-incorporated Kidney stained with BrdU Rabbit Recombinant Monoclonal Antibody (BRD2888R).

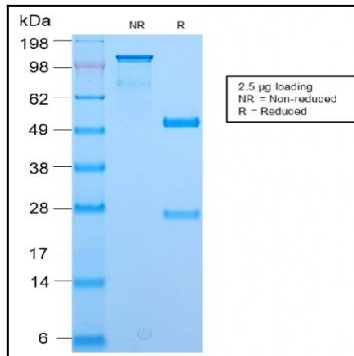


Fig. 2: SDS-PAGE Analysis Purified BrdU Rabbit Recombinant Monoclonal Antibody (BRD2888R). Confirmation of Purity and Integrity of Antibody.