

36-3792: Anti-HSV1 (Herpes Simplex Virus Type I) ICP8 Monoclonal Antibody(Clone: HSVI/2045)

Clonality :	Monoclonal
Clone Name :	HSVI/2045
Application :	WB
Alternative Name :	HSV1; Herpes simplex virus 1
Isotype :	Mouse IgG1, kappa
Immunogen Information :	Baculovirus-expressed HSV DNA polymerase (POL) and POL/UL42 complex

Description

The antibody reacts with HSV type 1 specific antigen. It is suitable for detection of HSV in human cellular material obtained from superficial lesions or biopsies and for the early identification of HSV in infected tissue cultures. The herpes simplex virus (HSV) (also known as cold sore, night fever or fever blister) is a virus that causes a contagious disease. There are two main types of Herpes Simplex Virus (HSV), 1 and 2. The HSV-1 strain generally appears in the orofacial organs. HSV2 usually resides in the sacral ganglion at the base of the spine. All herpes viruses are morphologically identical: they have a large double-stranded DNA genome and the virion consists of an icosahedral nucleocapsid, which is surrounded by a lipid bilayer envelope. ICP8, the HSV1 encoded single-strand DNA (ssDNA)-binding protein, is the major DNA binding protein of HSV1. ICP8 promotes single-stranded DNA to assemble into a homologous duplex plasmid producing a displacement loop. At higher concentrations, however, ICP8 facilitates the reverse reaction due to its helix destabilizing activity.

Product Info

Amount :	20 µg / 100 µg
Content :	200 µg/ml of Ab Purified from Bioreactor Concentrate by Protein A/G. Prepared in 10mM PBS with 0.05% BSA & 0.05% azide. Also available WITHOUT BSA & azide at 1.0mg/ml.
Storage condition :	Antibody with azide - store at 2 to 8°C. Antibody without azide - store at -20 to -80°C. Antibody is stable for 24 months. Non-hazardous.

Application Note

Western Blot (1-2ug/ml);

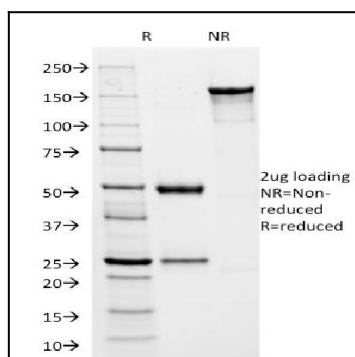


Fig. 1: SDS-PAGE Analysis Purified HSVI Mouse Monoclonal Antibody (HSVI/2045). Confirmation of Integrity and Purity