

36-3789: Anti-Helicobacter pylori Monoclonal Antibody(Clone: HP/1336)

Clonality :	Monoclonal
Clone Name :	HP/1336
Application :	ELISA,FACS,IF
Alternative Name :	H. pylori
Isotype :	Mouse IgG1, kappa
Immunogen Information :	Total sonicate of Helicobacter pylori

Description

The spiral shaped bacterium *Helicobacter pylori* is strongly associated with inflammation of the stomach and is also implicated in the development of gastric malignancy. *H. pylori* is known to cause peptic ulcers and chronic gastritis in human. It is associated with duodenal ulcers and may be involved in development of adenocarcinoma and low-grade lymphoma of mucosa associated lymphoid tissue in the stomach. This antibody stains the individual *H. pylori* bacterium when it presents on the surface of the epithelium or in the cytoplasm of the epithelial cells in biopsy tissue sections from the antrum and body of the stomach.

Product Info

Amount :	20 µg / 100 µg
Content :	200 µg/ml of Ab Purified from Bioreactor Concentrate by Protein A/G. Prepared in 10mM PBS with 0.05% BSA & 0.05% azide. Also available WITHOUT BSA & azide at 1.0mg/ml.
Storage condition :	Antibody with azide - store at 2 to 8°C. Antibody without azide - store at -20 to -80°C. Antibody is stable for 24 months. Non-hazardous.

Application Note

ELISA (For coating use Ab at 1-5µg/ml, order Ab without BSA); Flow Cytometry (1-2µg/million cells); Immunofluorescence (1-2µg/ml);

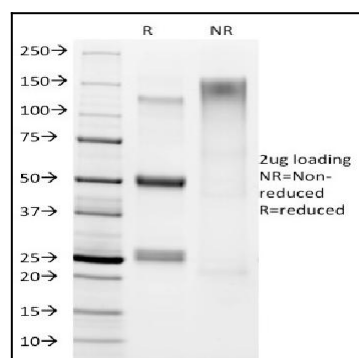


Fig. 1: SDS-PAGE Analysis Purified *Helicobacter pylori* Mouse Monoclonal Antibody (HP/1336). Confirmation of Integrity and Purity of antibody.