

## 36-3788: Anti-Ep-CAM / CD326 (Rat) Monoclonal Antibody(Clone: GZ-20)

<b>Clonality :</b>	Monoclonal
<b>Clone Name :</b>	GZ-20
<b>Application :</b>	FACS,IF,WB,IP
<b>Reactivity :</b>	Rat
<b>Gene ID :</b>	171577
<b>Uniprot ID :</b>	O55159
<b>Alternative Name :</b>	Adenocarcinoma-associated Antigen; Cell Surface Glycoprotein Trop-1; EGP2; EGP314; EGP40; Epithelial Cell Adhesion Molecule; Epithelial Glycoprotein 314; ESA; KSA; TACD1; TACSTD1; TROP1; Tumor-associated Calcium Signal Transducer 1, ECS-1, Epidermal Surface Antigen 1, ESA1, FLOT2, Flotillin-2, M17S1 (Membrane Component, Chromosome 17, Surface Marker-1), REG-1, Reggie-1, Reggie-2
<b>Isotype :</b>	Mouse IgG1, kappa
<b>Immunogen Information :</b>	Rat small intestine cells

### Description

Epitope of GZ-1 and GZ-20 monoclonal antibodies are different. EGP40 is a 40-43kDa transmembrane epithelial glycoprotein, also identified as epithelial specific antigen (ESA), or epithelial cellular adhesion molecule (Ep-CAM). It is expressed on basolateral cell surface in most simple epithelia and a vast majority of carcinomas.

### Product Info

<b>Amount :</b>	0.1 ml / 0.5 ml
<b>Content :</b>	Bioreactor Concentrate with 0.05% Azide. Contact us if you require it in a different format.
<b>Storage condition :</b>	Store at 2 to 8°C. Antibody is stable for 24 months. Non-hazardous.

### Application Note

Flow Cytometry (5-10ul/million cells); Immunofluorescence (1:50-1:100); Western Blot (1:100-1:200); Immunoprecipitation (5-10ul/500ug protein lysate);

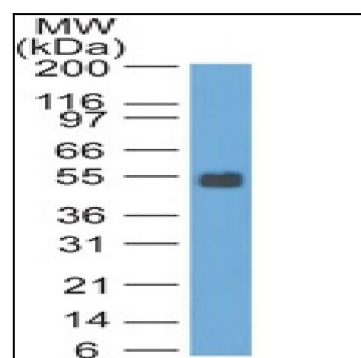


Fig. 1: Western Blot analysis of Rat Colon lysate probed with Ep-CAM Mouse Monoclonal Antibody (GZ-20).