

36-3783: Anti-Ep-CAM / CD326 (Rat) Monoclonal Antibody(Clone: GZ-1)

Clonality :	Monoclonal
Clone Name :	GZ-1
Application :	FACS,IF,WB,IP
Reactivity :	Rat
Gene ID :	171577
Uniprot ID :	O55159
Alternative Name :	Adenocarcinoma-associated Antigen; Cell Surface Glycoprotein Trop-1; EGP2; EGP314; EGP40; Epithelial Cell Adhesion Molecule; Epithelial Glycoprotein 314; ESA; KSA; TACD1; TACSTD1; TROP1; Tumor-associated Calcium Signal Transducer 1, ECS-1, Epidermal Surface Antigen 1, ESA1, FLOT2, Flotillin-2, M17S1 (Membrane Component, Chromosome 17, Surface Marker-1), REG-1, Reggie-1, Reggie-2
Isotype :	Mouse IgG1, kappa
Immunogen Information :	Rat small intestine cells

Description

Epitope of GZ-1 and GZ-20 monoclonal antibodies are different. EGP40 is a 40-43kDa transmembrane epithelial glycoprotein, also identified as epithelial specific antigen (ESA), or epithelial cellular adhesion molecule (Ep-CAM). It is expressed on basolateral cell surface in most simple epithelia and a vast majority of carcinomas.

Product Info

Amount :	0.1 ml / 0.5 ml
Content :	Bioreactor Concentrate with 0.05% Azide. Contact us if you require it in a different format.
Storage condition :	Store at 2 to 8°C. Antibody is stable for 24 months. Non-hazardous.

Application Note

Flow Cytometry (5-10ul/million cells); Immunofluorescence (1:50-1:100); Western Blot (1:100-1:200); Immunoprecipitation (5-10ul/500ug protein lysate);

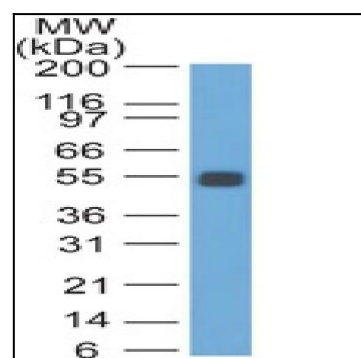


Fig. 1: Western Blot analysis of Rat Colon lysate probed with Ep-CAM Mouse Monoclonal Antibody (GZ-1).