

## 36-3782: Anti-Cytokeratin, Acidic (Type I or LMW) (Epithelial Marker) Monoclonal Antibody(Clone: AE-1)

<b>Clonality :</b>	Monoclonal
<b>Clone Name :</b>	AE-1
<b>Application :</b>	FACS,IF,WB,IHC
<b>Reactivity :</b>	Human, Mouse, Rat
<b>Gene :</b>	KRT77
<b>Gene ID :</b>	374454
<b>Uniprot ID :</b>	Q7Z794
<b>Alternative Name :</b>	K1B; KRT1B; Keratin, type II cytoskeletal 1b; K77; CK-1B; Keratin 1B; Keratin-77; Cytokeratin-1B; Type-II Keratin Kb39
<b>Isotype :</b>	Mouse IgG1, kappa
<b>Immunogen Information :</b>	Human epidermal keratin

### Description

This MA b recognizes the 56.5kDa (CK10); 50kDa (CK14); 50kDa (CK15); 48kDa (CK16); 40kDa (CK19) keratins of the acidic (Type I or LMW) subfamily. Twenty human keratins are resolved with two-dimensional gel electrophoresis into acidic (pI , 48, 46, 45, and 40kDa. MA b AE3 recognizes the 65-67, 64, 59, 58, 56, and 52kDa keratins of basic subfamily. Many studies have shown the usefulness of keratins as markers in cancer research and tumor diagnosis. AE1/AE3 is a broad spectrum anti pan-keratin antibody cocktail, which differentiates epithelial tumors from non-epithelial tumors e.g. squamous vs. adenocarcinoma of the lung, liver carcinoma, breast cancer, and esophageal cancer.

### Product Info

<b>Amount :</b>	20 µg / 100 µg
<b>Content :</b>	200 µg/ml of Ab Purified from Bioreactor Concentrate by Protein A/G. Prepared in 10mM PBS with 0.05% BSA & 0.05% azide. Also available WITHOUT BSA & azide at 1.0mg/ml.
<b>Storage condition :</b>	Antibody with azide - store at 2 to 8°C. Antibody without azide - store at -20 to -80°C. Antibody is stable for 24 months. Non-hazardous.

### Application Note

Flow Cytometry (1-2ug/million cells); Immunofluorescence (1-2ug/ml); Western Blot (1-2ug/ml); Immunohistochemistry (Formalin-fixed) (1-2ug/ml for 30 min at RT)(Staining of formalin-fixed tissues requires heating tissue sections in 10mM Tris with 1mM EDTA, pH 9.0, for 45 min at 95&degC followed by cooling at RT for 20 minutes);

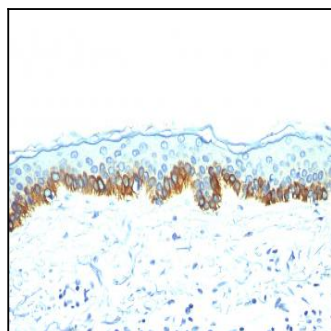


Fig. 1: Formalin-fixed, paraffin-embedded human Skin stained with Cytokeratin, LMW Mouse Monoclonal Antibody (AE-1).

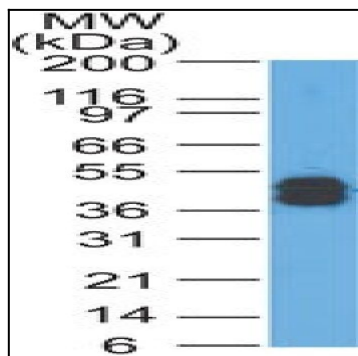


Fig. 2: Western Blot Analysis of A431 cells using Cytokeratin, LMW Mouse Monoclonal Antibody (AE-1).

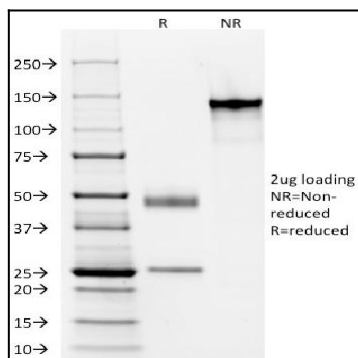


Fig. 3: SDS-PAGE Analysis Purified Cytokeratin, LMW Monoclonal Antibody (AE-1). Confirmation of Purity and Integrity of Antibody.