

36-3776: Anti-Cytokeratin 5/6/18 Monoclonal Antibody(Clone: SPM267)

Clonality :	Monoclonal
Clone Name :	SPM267
Application :	FACS,IF,WB,IHC
Reactivity :	Human, Rat
Alternative Name :	CK5; Keratin-5; KRT5; Cytoskeletal 6,; KRT6, CK18; CYK18; K18; Keratin-18; KRT18
Isotype :	Mouse IgG1, kappa
Immunogen Information :	Detergent-insoluble fraction of psoriatic human epidermis

Description

It recognizes polypeptides of 58kDa, 56kDa, and 45kDa, identified as cytokeratin 5, 6, and 18 respectively. It shows no reaction with keratin 1, 8, or 19. This MAb shows a broad pattern of reactivity with epithelial tissues, from simple glandular epithelia to stratified squamous epithelia. Epithelial cells are labeled whether they are ectodermal, mesodermal, or endodermal in origin. This MAb is useful in detecting cells of epithelial origin in mixed tumors, in effusions, in bone marrow samples, or in tissue culture cells.

Product Info

Amount :	20 µg / 100 µg
Content :	200 µg/ml of Ab Purified from Bioreactor Concentrate by Protein A/G. Prepared in 10mM PBS with 0.05% BSA & 0.05% azide. Also available WITHOUT BSA & azide at 1.0mg/ml.
Storage condition :	Antibody with azide - store at 2 to 8°C. Antibody without azide - store at -20 to -80°C. Antibody is stable for 24 months. Non-hazardous.

Application Note

Flow Cytometry (1-2ug/million cells); Immunofluorescence (1-2ug/ml); Western Blot (1-2ug/ml); Immunohistochemistry (Formalin-fixed) (1-2ug/ml for 30 min at RT)(Staining of formalin-fixed tissues requires heating tissue sections in 10mM Tris with 1mM EDTA, pH 9.0, for 45 min at 95°C followed by cooling at RT for 20 minutes);

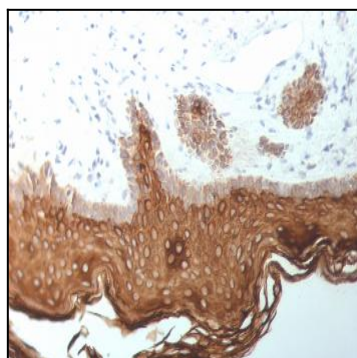


Fig. 1: Formalin-fixed, paraffin-embedded human Skin stained with Cytokeratin, 5/6/18 Mouse Monoclonal Antibody (SPM267).

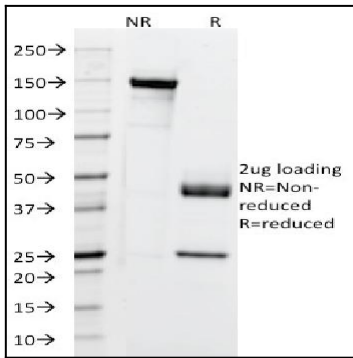


Fig. 2: SDS-PAGE Analysis Purified Cytokeratin, 5/6/18 Mouse Monoclonal Antibody (SPM267). Confirmation of Purity and Integrity of Antibody.