

## 36-3771: Anti-Human Nuclear Antigen (HNA) (Human Cell Marker) Monoclonal Antibody(Clone: 235-1)-CF488

<b>Clonality :</b>	Monoclonal
<b>Clone Name :</b>	235-1
<b>Application :</b>	FACS,IF
<b>Reactivity :</b>	Human
<b>Alternative Name :</b>	HNA; HuNu
<b>Isotype :</b>	Mouse IgG1, kappa
<b>Immunogen Information :</b>	Nuclei of human myeloid leukemia biopsy cells

### Description

This MAb is an excellent marker for human cells in xenographic model research. It reacts specifically with human cells. It is a part of a new panel of reagents, which recognizes subcellular organelles or compartments of human cells. These markers may be useful in identification of these organelles in cells, tissues, and biochemical preparations. MAb 235-1 recognizes an antigen associated with the nuclei in human cells. It can be used to stain the nuclei in cell or tissue preparations and can be used as a nuclear marker in subcellular fractions. It produces a speckled pattern in normal and malignant cells and may be used to stain the nuclei of cells in fixed or frozen tissue sections. It can also be used with paraformaldehyde fixed frozen tissue or cell preparations.

### Product Info

<b>Amount :</b>	0.5 ml at 100µg/ml
<b>Content :</b>	Antibody Purified from Bioreactor Concentrate by Protein A/G and conjugated to various reporter molecules. Prepared in 10mM PBS with 0.05% BSA and 0.05% azide. Contact us if you require this Ab in a different format.
<b>Storage condition :</b>	Antibody with azide - store at 4 to 8°C. Antibody is stable for 24 months. Non-hazardous.

### Application Note

Flow Cytometry (5ul per test per one million cells or 5ul per 100ul of whole blood);Immunofluorescence (1:50-1:100);

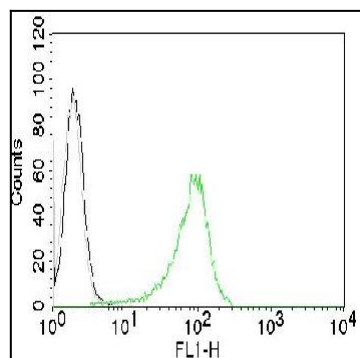


Fig. 1: Flow Cytometry of Human Nuclear Ag (HNA) on 293T cells. Black: cells alone; Grey: Isotype Control; Green: CF488-labeled HNA Monoclonal Antibody (235-1).