

36-3764: Anti-Hepatocyte Specific Antigen (Hepatocellular Marker) Monoclonal Antibody(Clone: HSA133)

Clonality :	Monoclonal
Clone Name :	HSA133
Application :	ELISA
Reactivity :	Human
Isotype :	Mouse IgG2b, kappa
Immunogen Information :	SK-H1A9-2 human hepatocellular carcinoma cells

Description

MAb HSA133 stains human liver canaliculi and a subset of hepatocellular carcinomas. In frozen sections, it stains liver canaliculi strongly and may be used as a marker of this hepatic substructure. Cell preparations of hepatocellular carcinoma biopsies and cell lines are found to bind this MAb on the cell surface. HSA133 strongly stains liver canaliculi and hepatic carcinoma cells using frozen sections or paraformaldehyde fixed cell preparations.

Product Info

Amount :	20 µg / 100 µg
Content :	200 µg/ml of Ab Purified from Bioreactor Concentrate by Protein A/G. Prepared in 10mM PBS with 0.05% BSA & 0.05% azide. Also available WITHOUT BSA & azide at 1.0mg/ml.
Storage condition :	Antibody with azide - store at 2 to 8°C. Antibody without azide - store at -20 to -80°C. Antibody is stable for 24 months. Non-hazardous.

Application Note

ELISA (For coating, purchase antibody without BSA);

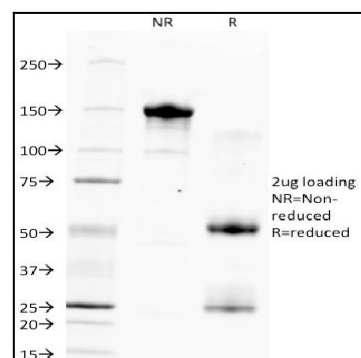


Fig. 1: SDS-PAGE Analysis Purified Hepatocyte Specific Antigen Monoclonal Antibody (HSA133). Confirmation of Purity and Integrity of Antibody.