

## 36-3724: Anti-Bromodeoxyuridine (BrdU) (Proliferation Marker) Monoclonal Antibody(Clone: BRD469)-CF488

|                                |                                            |
|--------------------------------|--------------------------------------------|
| <b>Clonality :</b>             | Monoclonal                                 |
| <b>Clone Name :</b>            | BRD469                                     |
| <b>Application :</b>           | FACS,IF                                    |
| <b>Reactivity :</b>            | All species                                |
| <b>Conjugate :</b>             | CF488                                      |
| <b>Alternative Name :</b>      | Bromodeoxyuridine, BUdr                    |
| <b>Isotype :</b>               | Mouse IgG1, kappa                          |
| <b>Immunogen Information :</b> | Bromodeoxyuridine (BrdU) conjugated to KLH |

### Description

It reacts with Bromodeoxyuridine (BrdU) in single stranded DNA (produced by partial denaturation of double stranded DNA), BrdU coupled to a protein carrier, as well as free BrdU. BrdU is a thymidine analog, incorporated into cell nuclei during DNA synthesis prior to mitosis. Antibody to BrdU is helpful in detecting S-phase cells, providing useful information on the aggressiveness of tumors.

### Product Info

|                            |                                                                                                                                                                                                                          |
|----------------------------|--------------------------------------------------------------------------------------------------------------------------------------------------------------------------------------------------------------------------|
| <b>Amount :</b>            | 0.5 ml at 100µg/ml                                                                                                                                                                                                       |
| <b>Content :</b>           | Antibody Purified from Bioreactor Concentrate by Protein A/G and conjugated to various reporter molecules. Prepared in 10mM PBS with 0.05% BSA and 0.05% azide. Contact us if you require this Ab in a different format. |
| <b>Storage condition :</b> | Antibody with azide - store at 4 to 8°C. Antibody is stable for 24 months. Non-hazardous.                                                                                                                                |

### Application Note

Flow Cytometry (5ul per test per one million cells or 5ul per 100ul of whole blood);Immunofluorescence (1:50-1:100);

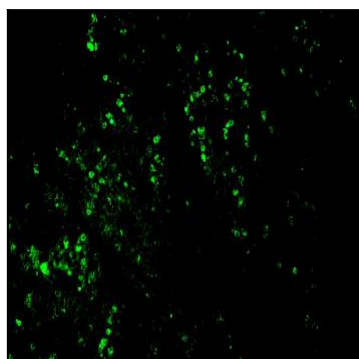


Fig. 1: Formalin-fixed, paraffin-embedded human colon carcinoma stained with CF488-conjugated Nucleolin MAb (364-5 + NCL/902).