

## 36-3721: Anti-CDw78 Monoclonal Antibody(Clone: DF1588)

<b>Clonality :</b>	Monoclonal
<b>Clone Name :</b>	DF1588
<b>Application :</b>	Functional Assay,FACS,IF
<b>Reactivity :</b>	Human
<b>Alternative Name :</b>	Leu21; Ba antigen; LO panBa
<b>Isotype :</b>	Mouse IgG1, kappa
<b>Immunogen Information :</b>	Human leucocytes

### Description

Reacts with a carbohydrate determinant, identified as CDw78 (Workshop V; Code CDw78.2). Epitope recognized by this MAb and Leu21 is the same. It is present on some immature and some peripheral blood B cells, and some B cell lines. Its expression is increased after B-cell activation in vitro. CDw78 is also found on tissue macrophages and on epithelial cells, but not on T cells, NK cells, monocytes, granulocytes and myeloid tissues. It appears that CDw78 is a determinant on a major histocompatibility complex (MHC) class II subpopulation.

### Product Info

<b>Amount :</b>	20 µg / 100 µg
<b>Content :</b>	200 µg/ml of Ab Purified from Bioreactor Concentrate by Protein A/G. Prepared in 10mM PBS with 0.05% BSA & 0.05% azide. Also available WITHOUT BSA & azide at 1.0mg/ml.
<b>Storage condition :</b>	Antibody with azide - store at 2 to 8°C. Antibody without azide - store at -20 to -80°C. Antibody is stable for 24 months. Non-hazardous.

### Application Note

Functional Studies (Order Ab without Azide); Flow Cytometry (1-2ug/million cells); Immunofluorescence (1-2ug/ml);

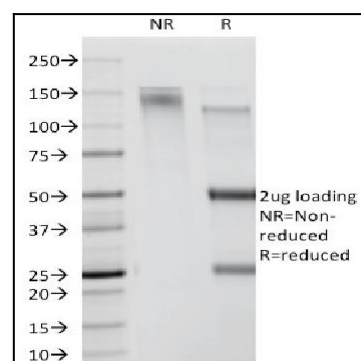


Fig. 1: SDS-PAGE Analysis Purified CDw78 Monoclonal Antibody (DF1588). Confirmation of Purity and Integrity of Antibody.