

36-3707: Anti-Giardia lamblia Monoclonal Antibody(Clone: BB1.1E5)

Clonality :	Monoclonal
Clone Name :	BB1.1E5
Application :	ELISA,IF
Alternative Name :	Giardia lamblia; G lamblia; Giardia intestinalis
Isotype :	Mouse IgG1, kappa
Immunogen Information :	Giardia lamblia

Description

Giardiasis is a diarrheal illness caused by a single celled microscopic protozoan parasite, Giardia lamblia, also known as Giardia intestinalis. Giardia lamblia exists in two forms, an active form called a trophozoite, and an inactive form called a cyst. The active trophozoite attaches to the lining of the small intestine and is responsible for causing the signs and symptoms of giardiasis. The trophozoite cannot live long outside of the body and spread of infection is via the cyst, which is excreted in the host's feces. When it is ingested, stomach acid activates the cyst, and the cyst develops into the disease causing trophozoite in the new host. Giardiasis is diagnosed by finding cysts or trophozoites in the feces.

Product Info

Amount :	20 µg / 100 µg
Content :	200 µg/ml of Ab Purified from Bioreactor Concentrate by Protein A/G. Prepared in 10mM PBS with 0.05% BSA & 0.05% azide. Also available WITHOUT BSA & azide at 1.0mg/ml.
Storage condition :	Antibody with azide - store at 2 to 8°C. Antibody without azide - store at -20 to -80°C. Antibody is stable for 24 months. Non-hazardous.

Application Note

ELISA (For coating use Ab at 1-5µg/ml, order Ab without BSA); Immunofluorescence (1-2µg/ml);

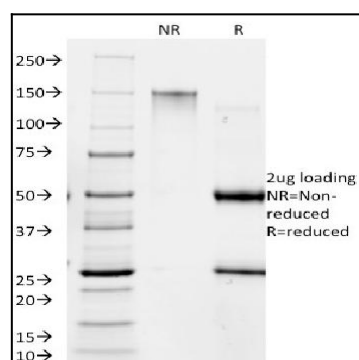


Fig. 1: SDS-PAGE Analysis Purified RANK Giardia lamblia Mouse Monoclonal Antibody (BB1.1E5). Confirmation of Purity and Integrity of Antibody.