

## 36-3700: Anti-Borrelia burgdorferi (p41 Flagellin) Monoclonal Antibody(Clone: 6802)

<b>Clonality :</b>	Monoclonal
<b>Clone Name :</b>	6802
<b>Application :</b>	ELISA,IF
<b>Alternative Name :</b>	Lyme disease; B. burgdorferi; Flagellar filament 41kDa core protein
<b>Isotype :</b>	Mouse IgG2a, kappa
<b>Immunogen Information :</b>	A crude sonicate of Borrelia spirochetes

### Description

This MAb recognizes *Borrelia burgdorferi*, and is specific for the p41 flagellar antigen (Flagellin). *Borrelia burgdorferi* is a species of bacteria of the spirochete class of the genus *Borrelia*. B. Lyme disease is a vector-borne, multisystem inflammatory disease caused by the spirochete *Borrelia burgdorferi*, which is transmitted to humans by the bite of ticks of the *Ixodes ricinus* complex. *B. burgdorferi* is divided into at least 11 species including *Borrelia burgdorferi sensu stricto*. *B. burgdorferi sensu stricto* resides in the cerebrospinal fluid of mammals in Europe and the United States and is most often associated with Lyme arthritis. *B. burgdorferi sensu stricto* commonly undergoes genome-wide genetic exchange, including plasmid transfers. This frequent recombination implies a potential for rapid adaptive evolution as well as a possible polygenic basis of *B. burgdorferi sensu stricto* pathogenicity.

### Product Info

<b>Amount :</b>	20 µg / 100 µg
<b>Content :</b>	200 µg/ml of Ab Purified from Bioreactor Concentrate by Protein A/G. Prepared in 10mM PBS with 0.05% BSA & 0.05% azide. Also available WITHOUT BSA & azide at 1.0mg/ml.
<b>Storage condition :</b>	Antibody with azide - store at 2 to 8°C. Antibody without azide - store at -20 to -80°C. Antibody is stable for 24 months. Non-hazardous.

### Application Note

ELISA (For coating use Ab at 1-5ug/ml, order Ab without BSA);Immunofluorescence (1-2ug/ml);

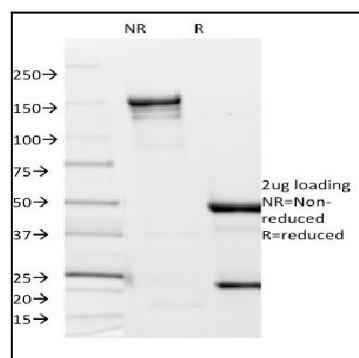


Fig. 1: SDS-PAGE Analysis Purified *Borrelia burgdorferi* (p41 Flagellin) (6802). Confirmation of Integrity and Purity of Antibody.