

36-3696: Anti-Erythrocyte Specific Monoclonal Antibody(Clone: SFL23.6)

Clonality :	Monoclonal
Clone Name :	SFL23.6
Application :	FACS,IF
Reactivity :	Human
Alternative Name :	RBC, Red blood cells, Erythroid Marker, Erythrocyte specific protein
Isotype :	Mouse IgG2b, kappa
Immunogen Information :	Hepatocytes from a 20-22 week-old human fetus

Description

Mouse Anti-Human Erythrocytes Clone SFL23.6 MAb is directed against an erythroid cell surface antigen. It shows a well-defined reactivity with cells of the erythroid lineage at all stages of maturation in the peripheral blood, bone marrow, and fetal liver. Non-erythroid lineages are negative by flow cytometry. Although the exact identity of the antigen has yet to be determined, it has been shown to be distinct from Glycophorin A. This MAb is useful in the diagnosis of erythroleukemia, identification of bone marrow erythroid precursors, gating erythroid nucleated precursor cells from malignant cells in bone marrow specimens.

Product Info

Amount :	20 µg / 100 µg
Content :	200 µg/ml of Ab Purified from Bioreactor Concentrate by Protein A/G. Prepared in 10mM PBS with 0.05% BSA & 0.05% azide. Also available WITHOUT BSA & azide at 1.0mg/ml.
Storage condition :	Antibody with azide - store at 2 to 8°C. Antibody without azide - store at -20 to -80°C. Antibody is stable for 24 months. Non-hazardous.

Application Note

Flow Cytometry (1-2ug/million cells); Immunofluorescence (1-2ug/ml);

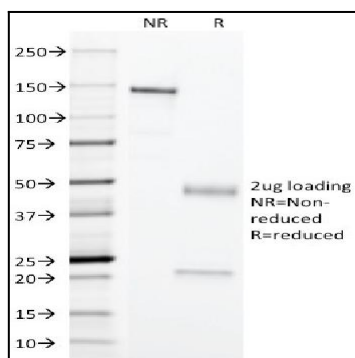


Fig. 1: SDS-PAGE Analysis Purified Erythrocyte Specific Mouse Monoclonal Antibody (SFL23.6). Confirmation of Purity and Integrity of Antibody.