

36-3686: Anti-Connexin 32 (Gap Junction Protein) Monoclonal Antibody(Clone: R5.21C)

Clonality :	Monoclonal
Clone Name :	R5.21C
Application :	ELISA
Reactivity :	Mouse, Rat
Gene :	Gjb1
Gene ID :	14618
Uniprot ID :	P28230
Alternative Name :	Charcot Marie Tooth neuropathy X linked; CMTX; CMTX1; Connexin-32; Cx32; GAP junction 28kDa liver protein; Gap junction beta-1 protein; Gap junction protein beta 1 32kD; GJB1
Isotype :	Rat IgG2a, kappa
Immunogen Information :	Mouse liver DOC-JR-plasma membranes

Description

This Ab recognizes a protein of 27-32kDa, identified as Connexin 32. The connexin family of proteins forms hexameric complexes called 'connexons' that facilitate movement of low molecular weight proteins between cells via gap junctions. Connexin proteins share a common topology of four transmembrane therefore, one connexin usually cannot fully substitute for another.

Product Info

Amount :	20 µg / 100 µg
Content :	200 µg/ml of Ab Purified from Bioreactor Concentrate by Protein G. Prepared in 10mM PBS with 0.05% BSA & 0.05% azide. Also available WITHOUT BSA & azide at 1.0mg/ml.
Storage condition :	Antibody with azide - store at 2 to 8°C. Antibody without azide - store at -20 to -80°C. Antibody is stable for 24 months. Non-hazardous.

Application Note

ELISA (For coating use Ab at 1-5ug/ml, order Ab without BSA);

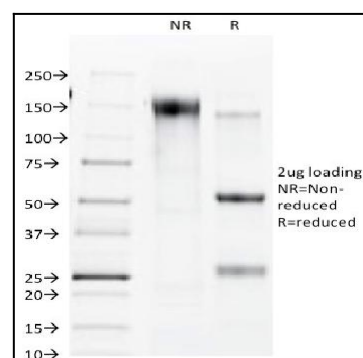


Fig. 1: SDS-PAGE Analysis Purified Connexin 32 Mouse Monoclonal Antibody (R5.21C). Confirmation of Purity and Integrity of Antibody.