

36-3605: Anti-CD38 (ADP Ribosyl Cyclase 1) Monoclonal Antibody(Clone: FS02)

Clonality :	Monoclonal
Clone Name :	FS02
Application :	FACS,IF
Reactivity :	Human
Gene :	CD38
Gene ID :	952
Uniprot ID :	P28907
Alternative Name :	Acute Lymphoblastic Leukemia Cells Antigen; ADP Ribosyl Cyclase 1; cADP-ribose Hydrolase 1; CD38H; NAD(+) Nucleosidase; NIM-R5 Antigen; p45; T10
Isotype :	Mouse IgG1, kappa
Immunogen Information :	Human CD38

Description

This antibody reacts with a type II membrane glycopeptide with a transmembrane sequence near the NH₂-terminus. CD38 is a type II transmembrane glycoprotein that is present on early B- and T-cell lineages and activated B- and T-cells but is absent from most mature resting peripheral lymphocytes. CD38 is also found on thymocytes, pre-B cells, germinal center B-cells, mitogen-activated T-cells, monocytes and Ig-secreting plasma cells. CD38 is expressed on CD34+ cells. The CD34+CD38- population of hematopoietic stems cells defines the most pluripotent cells (e.g. blast colony forming cells).

Product Info

Amount :	20 µg / 100 µg
Content :	200 µg/ml of Ab Purified from Bioreactor Concentrate by Protein A/G. Prepared in 10mM PBS with 0.05% BSA & 0.05% azide. Also available WITHOUT BSA & azide at 1.0mg/ml.
Storage condition :	Antibody with azide - store at 2 to 8°C. Antibody without azide - store at -20 to -80°C. Antibody is stable for 24 months. Non-hazardous.

Application Note

Flow Cytometry (1-2ug/million cells); Immunofluorescence (1-2ug/ml);

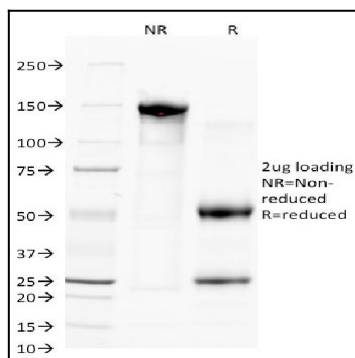


Fig. 1: SDS-PAGE Analysis Purified CD38 Mouse Monoclonal Antibody (FS02). Confirmation of Purity and Integrity of Antibody.