

36-3594: Anti-ATG5 (Autophagy Marker) Monoclonal Antibody(Clone: ATG5/2492)

Clonality :	Monoclonal
Clone Name :	ATG5/2492
Application :	ELISA,WB,IHC
Reactivity :	Human
Gene :	ATG5
Gene ID :	9474
Uniprot ID :	Q9H1Y0
Alternative Name :	APG5 autophagy 5 like (APG5L); Apoptosis-specific protein (ASP); ATG5; Autophagy related 5; hAPG5
Isotype :	Mouse IgG1, kappa
Immunogen Information :	Recombinant fragment of human ATG5 protein (around aa 1-119) (exact sequence is proprietary)

Description

The protein encoded by this gene, in combination with autophagy protein 12, functions as an E1-like activating enzyme in a ubiquitin-like conjugating system. The encoded protein is involved in several cellular processes, including autophagic vesicle formation, mitochondrial quality control after oxidative damage, negative regulation of the innate antiviral immune response, lymphocyte development and proliferation, MHC II antigen presentation, adipocyte differentiation, and apoptosis. The ATG5 protein is essential for autophagy; a process that is usually beneficial for cells to self-degrade their own components when they are no longer useful.

Product Info

Amount :	20 µg / 100 µg
Content :	200 µg/ml of Ab Purified from Bioreactor Concentrate by Protein A/G. Prepared in 10mM PBS with 0.05% BSA & 0.05% azide. Also available WITHOUT BSA & azide at 1.0mg/ml.
Storage condition :	Antibody with azide - store at 2 to 8°C. Antibody without azide - store at -20 to -80°C. Antibody is stable for 24 months. Non-hazardous.

Application Note

ELISA (For coating use Ab at 1-5ug/ml, order Ab without BSA); Western Blot (1-2ug/ml);Immunohistochemistry (Formalin-fixed) (1-2ug/ml for 30 min at RT)(Staining of formalin-fixed tissues requires heating tissue sections in 10mM Tris with 1mM EDTA, pH 9.0, for 45 min at 95°C followed by cooling at RT for 20 minutes);

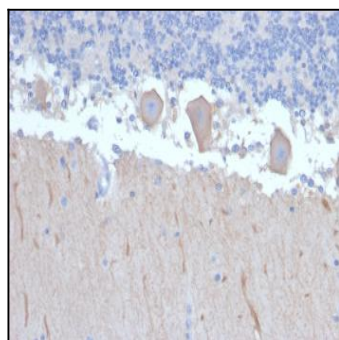


Fig. 1: Formalin-fixed, paraffin-embedded human Brain stained with ATG5 Mouse Monoclonal Antibody (ATG5/2492).

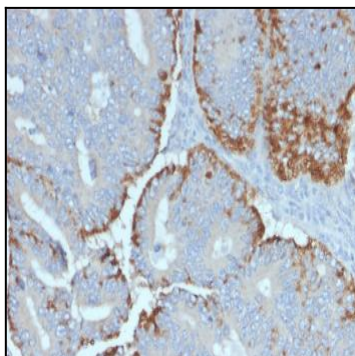


Fig. 2: Formalin-fixed, paraffin-embedded human Colon Carcinoma stained with ATG5 Mouse Monoclonal Antibody (ATG5/2492).

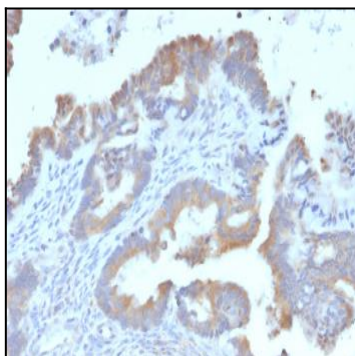


Fig. 3: Formalin-fixed, paraffin-embedded human Endometrial Carcinoma stained with ATG5 Mouse Monoclonal Antibody (ATG5/2492).

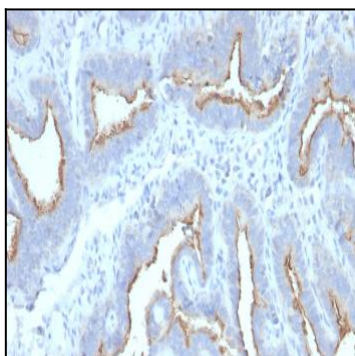


Fig. 4: Formalin-fixed, paraffin-embedded human Ovarian Carcinoma stained with ATG5 Mouse Monoclonal Antibody (ATG5/2492).

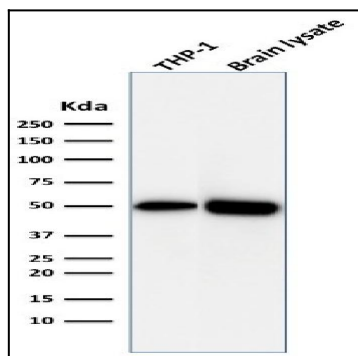


Fig. 5: Western Blot Analysis of THP1 cell lysate and Brain tissue lysate using ATG5 Mouse Monoclonal Antibody (ATG5/2492).

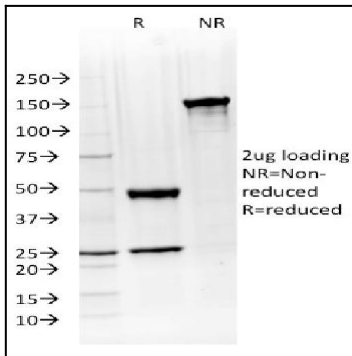


Fig. 6: SDS-PAGE Analysis Purified ATG5 Mouse Monoclonal Antibody (ATG5/2492). Confirmation of Purity and Integrity of Antibody.