

## 36-3529: Anti-CD14 (Monocyte / Macrophage Marker) Monoclonal Antibody(Clone: LPSR/654)

<b>Clonality :</b>	Monoclonal
<b>Clone Name :</b>	LPSR/654
<b>Application :</b>	FACS,IF
<b>Reactivity :</b>	Human
<b>Gene :</b>	CD14
<b>Gene ID :</b>	929
<b>Uniprot ID :</b>	P08571
<b>Alternative Name :</b>	Lipopolysaccharide receptor; LPS-R; LPSR; Mo2; Monocyte Differentiation Antigen 14; Myeloid cell-specific leucine-rich glycoprotein
<b>Isotype :</b>	Mouse IgG2b, kappa
<b>Immunogen Information :</b>	Recombinant full-length human LPSR protein

### Description

Recognizes a protein of 55kDa, identified as CD14 (also known lipopolysaccharide receptor). CD14 is expressed strongly on monocytes and macrophage and weakly on the surface of neutrophils. CD14 is anchored to cells by linkage to glycosylphosphatidylinositol (GPI) and functions as a high affinity receptor for complexes of LPS and LPS binding protein (LBP). Soluble CD14, also binding to LPS, acts at physiological concentration as an LPS agonist and has, at higher concentrations, an LPS antagonizing effect in cell activation.

### Product Info

<b>Amount :</b>	20 µg / 100 µg
<b>Content :</b>	200 µg/ml of Ab Purified from Bioreactor Concentrate by Protein A/G. Prepared in 10mM PBS with 0.05% BSA & 0.05% azide. Also available WITHOUT BSA & azide at 1.0mg/ml.
<b>Storage condition :</b>	Antibody with azide - store at 2 to 8°C. Antibody without azide - store at -20 to -80°C. Antibody is stable for 24 months. Non-hazardous.

### Application Note

Flow Cytometry (1-2ug/million cells); Immunofluorescence (1-2ug/ml);

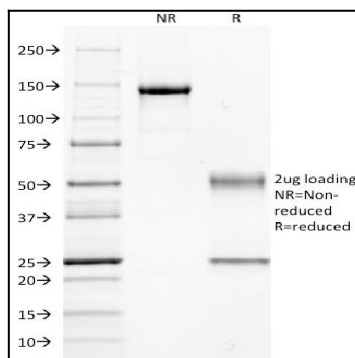


Fig. 1: SDS-PAGE Analysis Purified CD14 Mouse Monoclonal Antibody (LPSR/654). Confirmation of Integrity and Purity of Antibody.