

36-3526: Anti-CD14 (Monocyte / Macrophage Marker) Monoclonal Antibody(Clone: rLPSR/2408)

Clonality :	Monoclonal
Clone Name :	rLPSR/2408
Application :	IHC
Reactivity :	Human
Gene :	CD14
Gene ID :	929
Uniprot ID :	P08571
Alternative Name :	Lipopolysaccharide receptor; Mo2; Monocyte Differentiation Antigen 14; Myeloid cell-specific leucine-rich glycoprotein
Isotype :	Mouse IgG1, kappa
Immunogen Information :	Recombinant fragment of human CD14 protein (around aa 25-148) (exact sequence is proprietary)

Description

Recognizes a protein of 55kDa, identified as CD14 (also known lipopolysaccharide receptor). CD14 is expressed strongly on monocytes and macrophage and weakly on the surface of neutrophils. CD14 is anchored to cells by linkage to glycosylphosphatidylinositol (GPI) and functions as a high affinity receptor for complexes of LPS and LPS binding protein (LBP). Soluble CD14, also binding to LPS, acts at physiological concentration as an LPS agonist and has, at higher concentrations, an LPS antagonizing effect in cell activation.

Product Info

Amount :	20 µg / 100 µg
Content :	200 µg/ml of Ab Purified from Bioreactor Concentrate by Protein A/G. Prepared in 10mM PBS with 0.05% BSA & 0.05% azide. Also available WITHOUT BSA & azide at 1.0mg/ml.
Storage condition :	Antibody with azide - store at 2 to 8°C. Antibody without azide - store at -20 to -80°C. Antibody is stable for 24 months. Non-hazardous.

Application Note

Immunohistochemistry (Formalin-fixed) (1-2ug/ml for 30 minutes at RT),(Staining of formalin-fixed tissues is enhanced by heating tissue sections in 10mM Tris with 1mM EDTA, pH 9.0 for 45 min at 95°C followed by cooling at RT for 20 minutes),

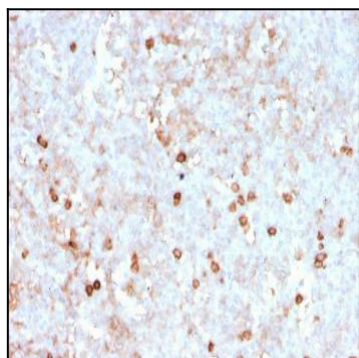


Fig. 1: Formalin-fixed, paraffin-embedded human spleen stained with CD14 Recombinant Mouse Monoclonal Antibody (rLPSR/2408).

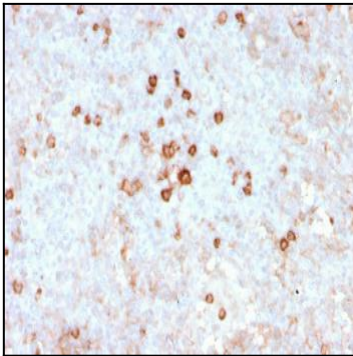


Fig. 2: Formalin-fixed, paraffin-embedded human spleen stained with CD14 Recombinant Mouse Monoclonal Antibody (rLPSR/2408).

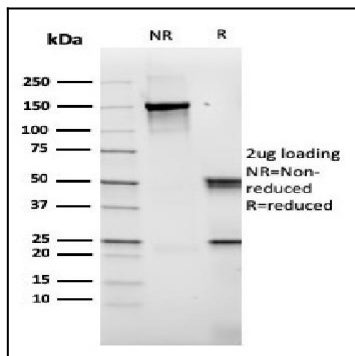


Fig. 3: SDS-PAGE Analysis Purified CD14 Recombinant Mouse Monoclonal Antibody (rLPSR/2408). Confirmation of Purity and Integrity of Antibody.